



RESOURCE AND PATIENT MANAGEMENT SYSTEM

Electronic Health Record (RPMS-EHR)

Installation Guide and Release Notes

Version 1.1
September 2007

Office of Information Technology (OIT)
Division of Information Resources
Albuquerque, New Mexico

PREFACE

This guide provides information regarding the loading and installation of the Indian Health Service RPMS Electronic Health Record v1.1 software.

TABLE OF CONTENTS

| | | |
|------------|---|----------|
| 1.0 | INSTALLATION NOTES..... | 4 |
| 1.1 | General Information | 4 |
| 1.2 | Target Systems..... | 4 |
| 1.3 | System Requirements..... | 4 |
| 1.4 | New Features of Version 1.1 | 5 |
| 1.4.1 | Alerts Cover Sheet | 5 |
| 1.4.2 | Allergies Cover Sheet | 5 |
| 1.4.3 | Chat Service..... | 5 |
| 1.4.4 | Common Library..... | 5 |
| 1.4.5 | Communication Services | 6 |
| 1.4.6 | Component Support Services | 6 |
| 1.4.7 | Consult Orders Cover Sheet | 6 |
| 1.4.8 | Consult Tracing | 6 |
| 1.4.9 | CPRS Context Adapter | 6 |
| 1.4.10 | CPRS Library | 6 |
| 1.4.11 | Crisis Alerts Cover Sheet | 7 |
| 1.4.12 | CWAD | 7 |
| 1.4.13 | Dictation Component..... | 7 |
| 1.4.14 | Electronic Signature Service | 7 |
| 1.4.15 | Encounter Context Object | 7 |
| 1.4.16 | Encounter Information Header | 8 |
| 1.4.17 | ESig Review Component | 8 |
| 1.4.18 | General Server..... | 8 |
| 1.4.19 | Health Factors Component | 8 |
| 1.4.20 | Health Summary Viewer | 9 |
| 1.4.21 | Historical Services Component | 9 |
| 1.4.22 | Immunizations Component | 9 |
| 1.4.23 | Internet Explorer Component | 9 |
| 1.4.24 | Lab Orders Cover Sheet | 9 |
| 1.4.25 | Lab Result Viewer | 9 |
| 1.4.26 | Medication Counseling..... | 9 |
| 1.4.27 | Medication Management..... | 10 |
| 1.4.28 | Medications Cover Sheet | 10 |
| 1.4.29 | Notifications..... | 11 |
| 1.4.30 | Orders | 11 |
| 1.4.31 | Patient Context Object | 12 |
| 1.4.32 | Patient Detail Component | 12 |
| 1.4.33 | Patient Education | 12 |
| 1.4.34 | Patient ID Header..... | 12 |
| 1.4.35 | Patient Refusals | 12 |
| 1.4.36 | Primary Care Header | 13 |
| 1.4.37 | Print Service vcPrint.dll | 13 |
| 1.4.38 | Problem List Cover Sheet | 13 |
| 1.4.39 | Problem Management Component (Problem List) | 13 |

| | | |
|------------|--|-----------|
| 1.4.40 | Progress Notes | 13 |
| 1.4.41 | Quick Order Wizard..... | 14 |
| 1.4.42 | Reminder Dialogs..... | 14 |
| 1.4.43 | Reminders Cover Sheet..... | 14 |
| 1.4.44 | Remote Data Component | 14 |
| 1.4.45 | Remote Views Service | 14 |
| 1.4.46 | Reports | 14 |
| 1.4.47 | Spell Checking Service | 15 |
| 1.4.48 | Super Bills Component | 15 |
| 1.4.49 | Telenet | 15 |
| 1.4.50 | Updated Utility..... | 15 |
| 1.4.51 | Visits Cover Sheet..... | 15 |
| 1.4.52 | Visit Services (VCPT Component) | 15 |
| 1.4.53 | Visual Interface Manager | 15 |
| 1.4.54 | VueCentric System Manager | 16 |
| 1.4.55 | BGO Component Suite | 17 |
| 1.4.56 | CWAD Component..... | 17 |
| 1.4.57 | Vital Measurement Component..... | 17 |
| 1.4.58 | Vital Measurement Data Entry | 17 |
| 2.0 | CONTENTS OF DISTRIBUTION | 18 |
| 2.1.1 | Version 1.1 Files | 18 |
| 2.1.2 | KIDS Distribution Contents | 18 |
| 2.2 | Requirements | 20 |
| 3.0 | INSTALLATION INSTRUCTIONS | 21 |
| 3.1 | Self-Extracting Archive..... | 21 |
| 3.2 | KIDS Distribution | 21 |
| 4.0 | CONTACT INFORMATION..... | 23 |
| 5.0 | APPENDIX I – CLIENT INSTALLATION | 24 |
| 6.0 | APPENDIX II – SERVER INSTALLATION | 28 |
| 7.0 | APPENDIX III – ROUTINE CHECKSUMS | 90 |

1.0 Installation Notes

Prefix: **ehr**

Current Version: **1.1**

Warning: Read entire notes file prior to attempting any installation.

1.1 General Information

- Make a copy of this distribution for offline storage.
- Print all notes/readme files.
- It is recommended that the terminal output during the installation be captured using an auxport printer attached to the terminal at which you are performing the software installation, or that it be captured by use of a host file. This will insure a printed audit trail if any problems should arise.
- This is a cumulative release for the EHR application. EHR version 1.0 and its patches are not required for installation.

1.2 Target Systems

The RPMS-EHR client application has been thoroughly tested and is supported on the following operating systems:

- Windows XP Home Edition
- Windows XP Professional
- Windows 2000

The application is not supported under Windows versions prior to Windows 2000. It has undergone minimal testing on the Windows Vista and Windows Server 2003 platforms.

Sites should ensure that client workstations have the most recent Windows updates. Particularly, the Microsoft .Net Framework version 2.0 and any patches to same should be installed on all workstations running the RPMS-EHR client application.

1.3 System Requirements

The following should be considered minimum system requirements for running the RPMS-EHR client application:

- Pentium (or equivalent) CPU at a minimum of 1 GHz effective clock speed.
- Minimum of 1 gigabyte of system RAM.
- Minimum of 1 gigabyte of free disk space.
- Minimum 10 megabit (100 megabit if imaging is in use) network interface card configured for LAN access.

1.4 New Features of Version 1.1

RPMS-EHR Version 1.1 contains the following enhancements and adjustments:

1.4.1 Alerts Cover Sheet

Rename space to BEH.

1.4.2 Allergies Cover Sheet

Rename space to BEH.

1.4.3 Chat Service

Recompiled with new Raize libraries.

1.4.4 Common Library

Corrected problem in which list grid did not refresh properly when modifying the RowCount property.

Added orcsDropDownList style to the combo box. It is the same as the orcsDropDown style, but does not allow text entry in the edit box.

Corrected a bug in data retrieval for long-list in which dragging the scrollbar button to an intermediate position could result in an empty list.

Corrected a bug in the object updates where the object source path was corrupted if it was an http or ftp URL reference.

Corrected a bug in which list grid did not always properly adjust row heights to accommodate cell contents.

Fixed bug where registering a component on-the-fly prevented its normal operation in the visual interface manager.

1.4.5 Communication Services

Added a new option to auto-size the sign-on dialog to fit the sign-on message.

Added the ability to specify the default formatting parameters for sign-on dialog in the vcBroker.ini file.

Added the ability to save sign-on dialog properties to the vcBroker.ini file, if the Server Edit parameter is set to 2.

Added an Apply button to the sign-on property dialog.

Added support for portable network graphics (PNG) image format.

Corrected a bug in the event subscription logic, which allowed a subscription request to be ignored if the session were already subscribed at a higher level for that event.

1.4.6 Component Support Services

Added VIM to list of object names recognized by the Replace Params method.

Fixed problem where a failed Visual Basic component could prevent normal shutdown of the application.

1.4.7 Consult Orders Cover Sheet

Rename space to BEH.

1.4.8 Consult Tracing

Rename space to BEH.

Component interaction disabled if patient context is null.

1.4.9 CPRS Context Adapter

Rename space to BEH.

1.4.10 CPRS Library

Rename space to BEH.

Major cleanup of original CPRS code. Includes improved code structure and formatting, inline documentation, removal of more than 30 memory leaks, and removal of redundant and unused code.

Icon legend no longer displays legends for components that are not present in the current environment.

1.4.11 Crisis Alerts Cover Sheet

Rename space to BEH.

1.4.12 CWAD

Rename space to BEH.

1.4.13 Dictation Component

Rename space to BEH.

Added the VISIT array node so that the Visit IEN would get set in the TIU Document.

1.4.14 Electronic Signature Service

Rename space to BEH.

Fixed bug that caused signature list to display improperly for users with ORELSE key.

1.4.15 Encounter Context Object

Rename space to BEH.

Modified to use IHS visit creation API.

Added dialog to show user similar visits when making a request to create one.

Added LOCKED property to indicate that a visit is locked and cannot be changed.

Added FORCEHANDLE property to allow a component to force the creation of a visit if one does not exist.

Added "Create a Visit Now" check box on new visit table to allow the user to force the creation of a new visit immediately.

Added a padlock icon on the visit list to indicate which visits are locked.

Type of visit on the new visit tab now defaults to the service category defined for the selected location in the CLINIC SETUP PARAMETERS file.

Added new visit summary report. This provides a more compact alternative to the old visit summary report.

Added support for additional visit service categories.

1.4.16 Encounter Information Header

Rename space to BEH.

Now displays the service category.

1.4.17 ESig Review Component

Rename space to BEH.

1.4.18 General Server

Consolidated all EHR configuration options under a single menu tree (BEHOMENU).

Package entity types for all parameters were changed to system entity types. Package entity types are problematic when used in parameter templates, because the default package is determined by the namespace of the template, rather than the individual parameters. Also, package entity types are problematic if the parameter is rename spaced. System entity types accomplish the same purpose without these side effects.

Corrected default patient report header so that it does not display patient age.

1.4.19 Health Factors Component

Ability to add comments to health factors.

1.4.20 Health Summary Viewer

Added new component for EHR toolbar to support so that a health summary (or other CPRS report) is displayed by clicking a button. This provides quick access to frequently used reports.

1.4.21 Historical Services Component

Simply addition of historical services and procedures with a pick list to facility entry of procedures reported in CRS.

1.4.22 Immunizations Component

EHR to display the IMMSEV forecast detail.

EHR to display an immunization's regular name form instead of the short name.

Sites can activate or activate patients from the immunization registry from the GUI.

1.4.23 Internet Explorer Component

The ALLOWNEWWINDOW property now defaults to true. Many of the problems reported for the IE component were related to the default setting of this property.

Enter key now works properly in web pages.

1.4.24 Lab Orders Cover Sheet

Rename space to BEH.

1.4.25 Lab Result Viewer

Rename space to BEH.

Component interaction will be disabled if patient context is null.

1.4.26 Medication Counseling

New component that provides support for automating the creation of visit, purpose of visit, and education event entries.

1.4.27 Medication Management

Added toolbar with buttons for new medication orders, processing existing medication orders, printing order summaries, and constraining the med list.

Added a function to process multiple medications. This function presents a medication order dialog for each selected medication with a list of valid actions, which may be performed. All valid order actions may be accomplished from this single interface. This should streamline the medication management task.

Added a toolbar button to constrain list to chronic medications only.

Added a toolbar button to constrain list to active medications only.

Added a toolbar button to allow setting the number of days back to retrieve medicines for the med list.

Added a toolbar button to print a medication summary. This summary may be restricted to chronic and/or active medications, and includes both short and long formats.

Added additional columns to list view for prescription number, ordering provider, issue date.

Added RTS (returned to stock) status, and removed last refill date for such medicines. Previously, one could not easily determine which medicines had been returned to stock. Requires APSP patch 1004.

Added a tooltip above status column to provide additional information about that status (supported for RTS and holds).

Added a button labeled “ADR’s” to medication order dialog, which brings up CWAD dialog when clicked for viewing ADR information. Permits viewing of a patient's recorded adverse reactions while ordering medications.

Added the ability to hide nonessential columns in the medication grid.

Added the ability to save column settings (width and visibility) on a per user basis.

Grid now shows alternate row shading to improve readability.

1.4.28 Medications Cover Sheet

Rename space to BEH.

1.4.29 Notifications

Added delete button and supporting code.

Added LEGEND property to support positioning legend on right or to completely hide it.

Addendum notifications are now deleted after viewing the addendum.

Corrected the problem where event callbacks may ignore setting of the "All Patients" checkbox.

Corrected problem where deleting an info-only alert also deleted the subsequent info-only alert.

Added sortable column for displaying date of notification delivery.

Modified indicator for info-only alert to improve appearance.

Column widths now saved with template snapshot.

1.4.30 Orders

Added required prompt to lab orders for clinical indication. Pick list pulled from POV and problem list with a provision for free text entry.

Modified the order action confirmation dialogs to be visually consistent, and more aesthetically pleasing.

Removed the write delayed orders button, and placed an entry in order list to do the same.

Order columns are now sort-able.

The ordering logic now honors the setting of the ORPF RESTRICT REQUESTOR parameter.

Rename space to BEH.

Component interaction disabled if patient context is null.

Sigs not calculated properly on complex dose tab of medication orders.

Added support for the ORWOR RX EXPIRED MAX parameter, which allows changing the setting of maximum days following expiration that a prescription may be renewed. This had previously been hard-coded to 120 days. Requires APSP patch 1004.

Removed the ORPF GRACE DAYS BEFORE PURGE parameter from ORP ORDER MISC parameter template, as purging of orders is not recommended.

Allow discontinuation of expired orders.

Added the ability to hide nonessential columns in order grid.

Added the ability to save column settings (width and visibility) on a per user basis.

Grid now shows alternate row shading to improve readability.

1.4.31 Patient Context Object

Setting default list to clinic does not function properly. Date range is not properly stored with the default list. Users will have to save not properly stored with the default list. Users will have to save the clinic as the default again after installing the new version.

Selecting a patient from a clinic list will now properly recognize a linked visit for the selected appointment.

Added support for temporary hospital record numbers.

Added Clear method to allow clearing patient context from a custom menu.

1.4.32 Patient Detail Component

Rename space to BEH.

Now disabled when no patient is selected.

1.4.33 Patient Education

Patient Education pick lists.

1.4.34 Patient ID Header

Rename space to BEH.

1.4.35 Patient Refusals

Populates missing Refusal Item field values in existing entries in PATIENT REFUSALS FOR SERVICE/NMI file.

Now stores Refusal Item for all refusals documented via the GUI.

1.4.36 Primary Care Header

Rename space to BEH.

The server code was modified to use IHS primary care and primary care team databases.

1.4.37 Print Service vcPrint.dll

Added the Print2 method, which extends the Print method by adding the ability to specify a printer type (local, remote, or last selected).

Added support for printing multiple copies.

Added dialog to allow the aborting of a print operation in progress.

Added UpdatePreview method to allow update of the contents of an existing print preview dialog.

Added ability to minimize/maximize preview window when shown amodally, and to maximize preview window when shown modally.

1.4.38 Problem List Cover Sheet

Rename space to BEH.

Caption now defaults to "Active Problem List".

1.4.39 Problem Management Component (Problem List)

Facilitate logical grouping of problem list via decimalization.

Facility sorting of problem list via prioritization.

1.4.40 Progress Notes

Rename space to BEH.

Component interaction disabled if patient context is null.

Dialog templates now request verification when Cancel button pressed.

Fixed defect where tree view gave appearance of multiple notes being edited concurrently.

Processing a progress note alert now sets the visit context to the associated visit.

1.4.41 Quick Order Wizard

Rename space to BEH.

1.4.42 Reminder Dialogs

Added support for new reminder dialog prompts for several PCC fields:

- Immunizations: site, lot, volume, vaccine information sheet date, refusals.
- Patient education: refusals, elapsed time, setting, goals, outcome.
- Skin tests: reading date, reading person, date given, refusals.
- Vital measurements: most common types.

Added scroll wheel mouse support to reminder dialogs.

1.4.43 Reminders Cover Sheet

Rename space to BEH.

1.4.44 Remote Data Component

Rename space to BEH.

1.4.45 Remote Views Service

Rename space to BEH.

1.4.46 Reports

Rename space to BEH.

Component interaction disabled if patient context is null.

Added supporting logic for "signing" of imaging alerts.

Fixed issue with imaging notification not finding target report if date range parameters were too narrow.

1.4.47 Spell Checking Service

Fixed problem with losing open Word document after performing spell check in EHR.

1.4.48 Super Bills Component

Sites can create pick list associations for procedures and services with any number of associated items (cpt codes, modifiers, education, health factors).

1.4.49 Telnet

Remaps +, -, /, and * keys on numeric keypad to be their normal ASCII equivalents.

1.4.50 Updated Utility

Added fade effect feature for splash screen. The fade entry in ini file controls availability and speed of this effect.

If an updated component fails to register properly, it will now be removed from the client. This prevents the situation where a component fails to register, but is left on the client machine. In this case, the updater will not attempt to copy this component again, since it is already present.

1.4.51 Visits Cover Sheet

Rename space to BEH.

1.4.52 Visit Services (VCPT Component)

Populate and display transaction code instead of CPT if a charge ticket is included.

1.4.53 Visual Interface Manager

Added Popup2 and BringToFront2 methods to allow invoking these operations from custom menus. The Popup and Bring To Front methods require an interface reference to function. This is not suitable for invocation from custom menus. These new methods allow passing a programmatic identifier in place of an interface reference.

Enhanced logic for streaming user interface layouts to templates to provide more control over ordering of child components. This enhancement improves dialogs that

display layout information by forcing the ordering of child components to be consistent with their visual ordering.

Added clipboard support for design mode. Portions of the visual interface can be copied to and pasted from the clipboard. This is a significant enhancement to design mode, which facilitates copying user interface elements from one template to another.

Replaced the Delete Objects dialog with the Layout Manager. Like the Delete Object dialog, the Layout Manager displays objects in a tree view but allows multiple operations (cut, copy, paste, delete, move, set properties, display about box) to be performed on objects in one place. This is a significant enhancement to the design mode, which simplifies the manipulation of objects.

Added alignment grid to container objects.

Added option dialog to design mode to allow configuring alignment grid.

Changed the exception log dialog to be more aesthetically pleasing, and automatically resize to its contents.

Corrected the problem where popup dialogs from .Net components were visible when the application was locked.

Added support for portable network graphics (PNG) image formats.

Added support for Windows XP themes.

Added scroll wheel mouse support for scroll box stock object.

Fixed catastrophic error seen when scrolling a scroll box stock object containing other objects.

Added ReverseTabs property to tabbed notebook stock object.

Made change to allow application to run under Windows Vista operating system.

1.4.54 VueCentric System Manager

Removed CIAVM DEFAULT TARGET parameter. Instead, this setting is stored in the user settings area of the Window registry for each RPMS system. This has always been a source of confusion. Since this setting applies only to the vcManager utility and is really a user preference, it makes sense to make it a local user setting.

Added toolbar to Serializable properties tab to allow changing ordering and facilitate deletion of entries.

1.4.55 BGO Component Suite

Complete rewrite of client- and server-side code. Includes all PCC-related components.

Improved efficiency by eliminating redundant and unnecessary remote procedure calls.

All components are now compatible with new visit creation and editing rules.

Buttons and menu options enabled only if associated action is valid.

Improved error reporting.

Support for manual data refresh.

Automatic display refresh when viewed data changes.

Remote procedure calls are now performed through supported mechanism.

Improved support for entering and editing historical visit data and refusals.

Now uses supported API for visit creation.

Support for creating multiple chief complaint entries.

1.4.56 CWAD Component

Is now disabled when no patient is selected.

1.4.57 Vital Measurement Component

Can now select among three unit display options: metric, US, or default.

Can override default display units for any measurement type at several levels (user, site, etc.)

Added checkbox for suppressing display of percentiles when desired.

Improved operation of display grid on graphing dialog.

1.4.58 Vital Measurement Data Entry

Added support for using default units as unit of measurement for data entry.

2.0 Contents of Distribution

2.1.1 Version 1.1 Files

| File Name | Description |
|--------------|--------------------------------|
| ehr_0110.exe | Self-extracting zip file |
| ehr_011i.pdf | Installation notes (this file) |
| ehr_0110.k | KIDS installation file |

2.1.2 KIDS Distribution Contents

| | KIDS Distribution Contents |
|----|----------------------------|
| 1 | CIA UTILITIES 1.2 |
| 2 | CIA NETWORK COMPONENTS 1.1 |
| 3 | CIAN*1.1*001003 |
| 4 | VUECENTRIC FRAMEWORK 1.1V2 |
| 5 | VUECENTRIC COMPONENTS 1.1 |
| 6 | BEH UTILITIES 1.2 |
| 7 | BEH COMPONENTS 1.1 |
| 8 | OR*3.0*1002 |
| 9 | CIAO*1.1*002001 |
| 10 | CIAO*1.1*004001 |
| 11 | CIAO*1.1*003001 |
| 12 | CIAO*1.1*008001 |
| 13 | CIAO*1.1*009001 |
| 14 | CIAO*1.1*005001 |
| 15 | CIAO*1.1*006001 |
| 16 | BEHO*1.1*007001 |
| 17 | BEHO*1.1*026001 |
| 18 | BEHO*1.1*027001 |
| 19 | BEHO*1.1*028001 |
| 20 | BEHO*1.1*017001 |
| 21 | BEHO*1.1*035001 |
| 22 | BEHO*1.1*022001 |

| | KIDS Distribution Contents |
|----|-----------------------------------|
| 23 | BEHO*1.1*029001 |
| 24 | BEHO*1.1*030001 |
| 25 | BEHO*1.1*040001 |
| 26 | BEHO*1.1*018001 |
| 27 | BEHO*1.1*014002 |
| 28 | BEHO*1.1*005001 |
| 29 | BEHO*1.1*031001 |
| 30 | BEHO*1.1*016001 |
| 31 | BEHO*1.1*032001 |
| 32 | BEHO*1.1*019001 |
| 33 | BEHO*1.1*009002 |
| 34 | BEHO*1.1*033001 |
| 35 | BEHO*1.1*002002 |
| 36 | BEHO*1.1*011001 |
| 37 | BEHO*1.1*004002 |
| 38 | BEHO*1.1*010001 |
| 39 | BEHO*1.1*025001 |
| 40 | BEHO*1.1*003001 |
| 41 | BEHO*1.1*036001 |
| 42 | BEHO*1.1*034001 |
| 43 | BEHO*1.1*015001 |
| 44 | BEHO*1.1*039001 |
| 45 | BEHO*1.1*024001 |
| 46 | BEHO*1.1*020001 |
| 47 | BEHO*1.1*021001 |
| 48 | BEHO*1.1*023001 |
| 49 | BEHO*1.1*006001 |
| 50 | BEHO*1.1*037001 |
| 51 | BEHO*1.1*001002 |
| 52 | BEHO*1.1*041001 |
| 53 | BEHO*1.1*042001 |
| 54 | BEHO*1.1*044001 |
| 55 | BGO*1.1*3 |

2.2 Requirements

- VA Kernel v8.0 or later
- VA FileMan v22.0 or later
- Cache v5.0 or later
- BGU v1.5 or later
- APSP*7.0*1004
- OR*3.0*1001
- Immunization v8.1
- Microsoft .Net Framework v2.0 on client workstations

3.0 Installation Instructions

All EHR users should be logged off the system during the installation process. Other RPMS users may remain on the system.

3.1 Self-Extracting Archive

| Step | Instructions |
|------|--|
| 1 | Execute the self-extracting archive (ehr_0110.exe) on the server where the RPMS-EHR shared folder resides. |
| 2 | When prompted for the installation folder, enter the full path to the shared folder where your bin and lib folders reside for the installation being updated. |
| 3 | Click the Unzip button to proceed with the extraction of compressed files. |
| 4 | When prompted, update any <i>ini</i> file settings if necessary and click OK. The VueCentric <i>ini</i> file will be updated with the new settings. Version numbers of new components will also be automatically updated at this time. |

3.2 KIDS Distribution

| Step | Instructions |
|------|--|
| 1 | Load the distribution (ehr_0110.k) into KIDS using <i>option 1</i> on the KIDS Installation menu. |
| 2 | Verify the checksums using <i>option 2</i> on the KIDS Installation Menu. |
| 3 | Consider using the options 3 and 4 on the KIDS Installation Menu to print and compare the transport. |
| 4 | Install the distribution using option 6 on the KIDS Installation Menu. |
| 5 | You may be informed that one or more builds have already been installed and be prompted to continue loading. Respond YES in each case. |
| 6 | You may be informed that one or more broker processes are currently running. This is normal. Respond by entering a “Y” at the prompt to continue the installation. |
| 7 | When prompted to enable VueCentric logins, respond by entering “Y”. |

Note: Review the system error trap following installation to verify that no errors occurred during installation. You may see the error <EDITED>^CIANBEVT in the error trap. This is normal and not cause for concern. Any other error occurring during the installation process may be an indication of a failed installation and should be investigated further.

4.0 Contact Information

If you have any questions or comments regarding this distribution, please contact the OIT User Support (IHS) by:

Phone: (505) 248-4371 or
(888) 830-7280

Fax: (505) 248-4297

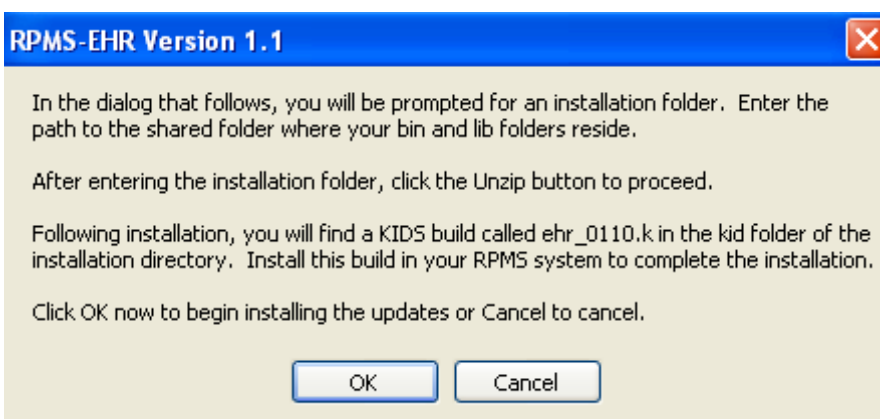
Web: <http://www.ihs.gov/GeneralWeb/HelpCenter/Helpdesk/index.cfm>

Email: support@ihs.gov

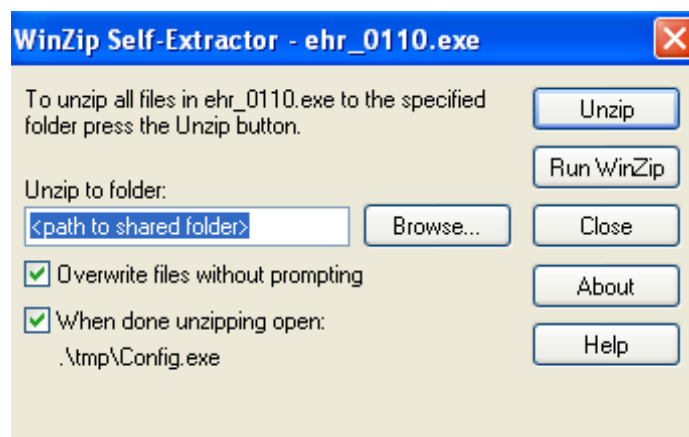
5.0 Appendix I – Client Installation

A self-extracting archive (file ehr_0110.exe) is provided for installation of the client application components. These components are to be installed in a shared folder on a file server. The EHR application will automatically deploy components from this location to the client workstations. All users of the EHR application should have read-only access to this folder.

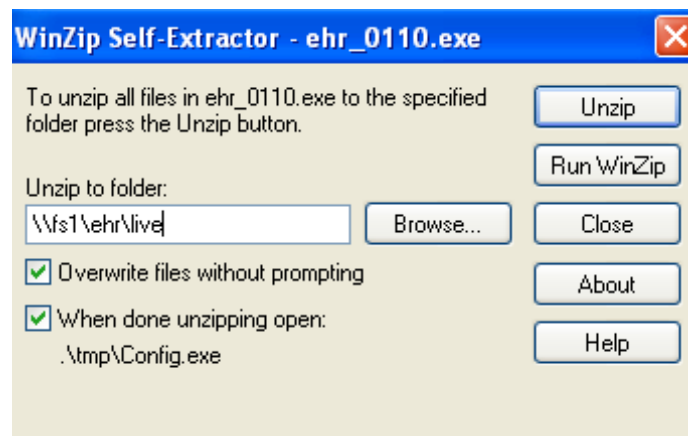
To install the client components to the shared folder, execute the self-extracting archive by double-clicking on the executable file. You must have read and write access to the shared folder to complete this installation. You will see the following dialog:



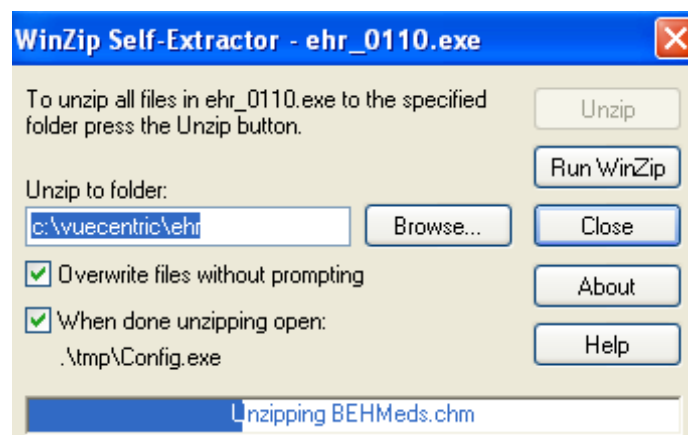
Click OK to proceed. The following dialog appears:



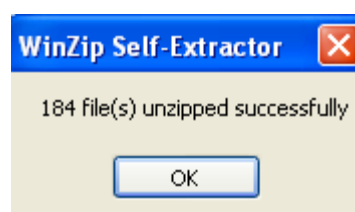
Enter the full path to the shared folder where the client files are to reside. If this is an update to an existing installation, this will be the folder than contains the 'bin' and 'lib' folders from the previous installation.



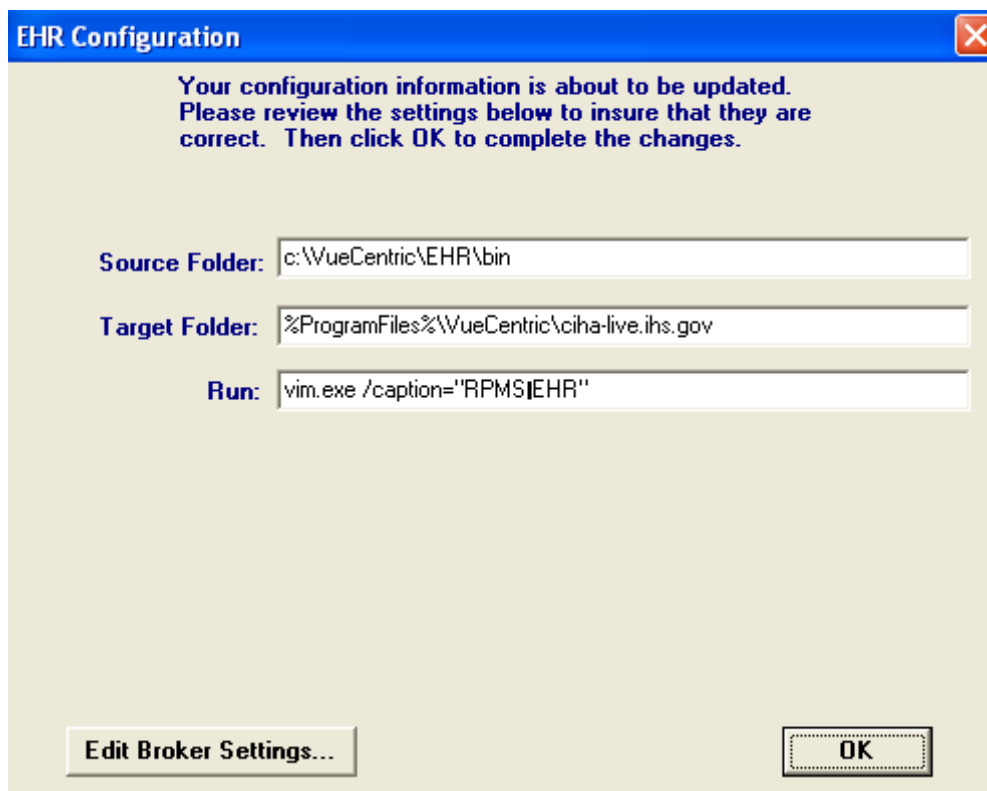
Click the 'Unzip' button to begin the installation process. Installation progress is displayed at the bottom of the dialog:



When the extraction process completes, you will see a confirmation dialog:



Click 'OK' to dismiss the dialog. The EHR configuration dialog will then appear.

The image shows a Windows-style dialog box titled "EHR Configuration" with a blue header bar and a red close button in the top right corner. The main area has a light beige background. At the top, a message in blue text reads: "Your configuration information is about to be updated. Please review the settings below to insure that they are correct. Then click OK to complete the changes." Below this, there are three text input fields. The first is labeled "Source Folder:" and contains the text "c:\VueCentric\EHR\bin". The second is labeled "Target Folder:" and contains "%ProgramFiles%\VueCentric\ciha-live.ihs.gov". The third is labeled "Run:" and contains "vim.exe /caption='RPMS|EHR'". At the bottom left is a button labeled "Edit Broker Settings..." and at the bottom right is a button labeled "OK".

EHR Configuration

Your configuration information is about to be updated.
Please review the settings below to insure that they are correct. Then click OK to complete the changes.

Source Folder: c:\VueCentric\EHR\bin

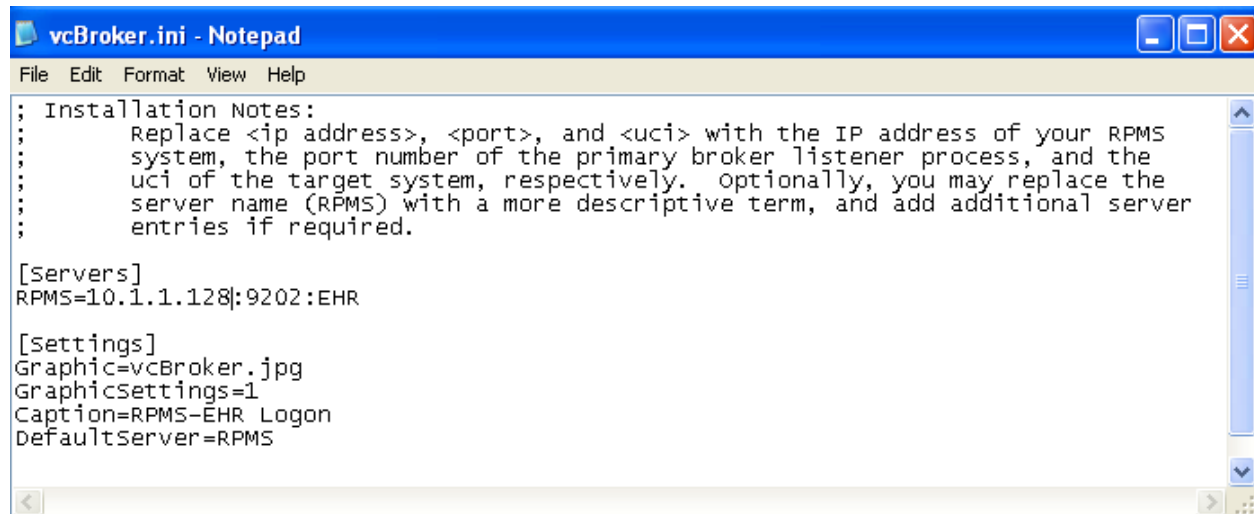
Target Folder: %ProgramFiles%\VueCentric\ciha-live.ihs.gov

Run: vim.exe /caption='RPMS|EHR'

Edit Broker Settings... OK

If you are updating an existing installation, your current values will be displayed. Unless you have changed folder locations, you should not have to change these settings. If this is a new installation, enter the appropriate values for each of the prompts. For *source folder*, this should be the full UNC path to the location of the 'bin' folder within your shared folder. This path should be resolvable by all users on all client workstations that are to run the EHR application. For *target folder*, this is the path to the application folder on the client workstation where the EHR application will deploy the client components. The recommended path is as shown, substituting the domain name of the target RPMS system in place of the domain name above. The *run* setting can be left as is, or a custom caption can be added if desired.

If this is a new installation, you should also edit your broker settings by clicking the 'Edit Broker Settings' button. This will load the vcBroker.ini file into Notepad for editing. Make any necessary changes and save the file before exiting Notepad.



```
; Installation Notes:
;   Replace <ip address>, <port>, and <uci> with the IP address of your RPMS
;   system, the port number of the primary broker listener process, and the
;   uci of the target system, respectively.  Optionally, you may replace the
;   server name (RPMS) with a more descriptive term, and add additional server
;   entries if required.

[Servers]
RPMS=10.1.1.128|9202:EHR

[Settings]
Graphic=vcBroker.jpg
GraphicSettings=1
Caption=RPMS-EHR Logon
DefaultServer=RPMS
```

Close the EHR Configuration dialog by clicking the OK button. You will see a splash screen that indicates that file versions are being updated. When the splash screen closes, the client installation is complete.

Note: Any customized msi files you may have in your “utl” folder (i.e., EHR_Shortcut2.msi and vcUpdaterService2.msi) will be preserved. There are no changes to the msi files delivered with this installation from previous installations. Therefore, if you have already deployed the msi files to your client workstations, you will not need to redeploy them after this installation.

6.0 Appendix II – Server Installation

Install the EHR v1.1 KIDS build using the KIDS menu. The following represents a typical installation. The exact output will depend on whether this is a first time installation or an update to an existing installation. If KIDS indicates that a component has already been installed, enter YES when prompted to continue with the loading process.

Kernel Installation & Distribution System

- 1 Load a Distribution
- 2 Verify Checksums in Transport Global
- 3 Print Transport Global
- 4 Compare Transport Global to Current System
- 5 Backup a Transport Global
- 6 Install Package(s)
- Restart Install of Package(s)
- Unload a Distribution

Select Installation Option: 1 Load a Distribution

Enter a Host File: P:\V1.1\ehr_0110.k

KIDS Distribution saved on Feb 09, 2007@10:23:35

Comment: RPMS-EHR Version 1.1

This Distribution contains Transport Globals for the following Package(s):

EHR 1.1

CIA UTILITIES 1.2

Build CIA NETWORK COMPONENTS 1.1 has been loaded before, here is when:

| | |
|----------------------------|-------------------------------------|
| CIA NETWORK COMPONENTS 1.1 | Install Completed |
| | was loaded on Jan 14, 2004@17:17:31 |
| CIA NETWORK COMPONENTS 1.1 | Install Completed |
| | was loaded on Jan 31, 2004@14:38 |
| CIA NETWORK COMPONENTS 1.1 | Install Completed |
| | was loaded on Feb 23, 2005@10:28:44 |

OK to continue with Load? NO// YES

CIAN*1.1*001003

VUECENTRIC FRAMEWORK 1.1V2

Build VUECENTRIC COMPONENTS 1.1 has been loaded before, here is when:

| | |
|---------------------------|-------------------------------------|
| VUECENTRIC COMPONENTS 1.1 | Install Completed |
| | was loaded on Jan 14, 2004@17:20:47 |
| VUECENTRIC COMPONENTS 1.1 | Install Completed |
| | was loaded on Jan 31, 2004@14:55:08 |
| VUECENTRIC COMPONENTS 1.1 | Install Completed |
| | was loaded on Apr 29, 2004@14:11:23 |
| VUECENTRIC COMPONENTS 1.1 | Install Completed |
| | was loaded on May 01, 2004@00:19:13 |
| VUECENTRIC COMPONENTS 1.1 | Install Completed |
| | was loaded on Feb 23, 2005@10:29:41 |

OK to continue with Load? NO// YES

BEH UTILITIES 1.2

Build BEH COMPONENTS 1.1 has been loaded before, here is when:

| | |
|--------------------|-------------------------------------|
| BEH COMPONENTS 1.1 | Install Completed |
| | was loaded on Nov 03, 2005@15:07:24 |

OK to continue with Load? NO// YES

OR*3.0*1002

CIAO*1.1*002001

CIAO*1.1*004001

CIAO*1.1*003001

CIAO*1.1*008001

CIAO*1.1*009001

CIAO*1.1*005001

CIAO*1.1*006001

Build BEHO*1.1*007001 has been loaded before, here is when:

BEHO*1.1*007001 Install Completed
 was loaded on Nov 03, 2005@15:07:25
 OK to continue with Load? NO// YES

BEHO*1.1*026001
 BEHO*1.1*027001
 BEHO*1.1*028001
 BEHO*1.1*017001
 BEHO*1.1*035001
 BEHO*1.1*022001
 BEHO*1.1*029001
 BEHO*1.1*030001
 BEHO*1.1*040001
 BEHO*1.1*018001
 BEHO*1.1*005001
 BEHO*1.1*031002
 BEHO*1.1*016001
 BEHO*1.1*032001
 BEHO*1.1*019001
 BEHO*1.1*009002
 BEHO*1.1*033001
 BEHO*1.1*002002
 BEHO*1.1*011001
 BEHO*1.1*004002
 BEHO*1.1*010001
 BEHO*1.1*025001
 BEHO*1.1*003001
 BEHO*1.1*036001
 BEHO*1.1*034001
 BEHO*1.1*015001
 BEHO*1.1*039001
 BEHO*1.1*024001
 BEHO*1.1*020001
 BEHO*1.1*021001

Build BEHO*1.1*023001 has been loaded before, here is when:
 BEHO*1.1*023001 Install Completed

was loaded on Nov 03, 2005@15:07:46
 OK to continue with Load? NO// YES

Build BEHO*1.1*006001 has been loaded before, here is when:
 BEHO*1.1*006001 Install Completed

was loaded on Nov 03, 2005@15:07:25
 OK to continue with Load? NO// YES

BEHO*1.1*037001
 BEHO*1.1*001002
 BEHO*1.1*041001
 BEHO*1.1*042001
 BEHO*1.1*044001
 BGO*1.1*3

Distribution OK!

Want to Continue with Load? YES// YES
 Loading Distribution...

Build EHR 1.1 has an Enviromental Check Routine
 Want to RUN the Environment Check Routine? YES// YES

EHR 1.1
 Will first run the Environment Check Routine, CIAVIN11

CIA UTILITIES 1.2
 CIA NETWORK COMPONENTS 1.1
 CIAN*1.1*001003
 Will first run the Environment Check Routine, CIANBINI

VUECENTRIC FRAMEWORK 1.1V2
 Will first run the Environment Check Routine, CIAVINIT

VUECENTRIC COMPONENTS 1.1
 BEH UTILITIES 1.2
 BEH COMPONENTS 1.1
 OR*3.0*1002
 Will first run the Environment Check Routine, ORIN1002

CIAO*1.1*002001

Will first run the Environment Check Routine, CIAOINIT

CIAO*1.1*004001
Will first run the Environment Check Routine, CIAOINIT

CIAO*1.1*003001
Will first run the Environment Check Routine, CIAOINIT

CIAO*1.1*008001
Will first run the Environment Check Routine, CIAOINIT

CIAO*1.1*009001
Will first run the Environment Check Routine, CIAOINIT

CIAO*1.1*005001
Will first run the Environment Check Routine, CIAOINIT

CIAO*1.1*006001
Will first run the Environment Check Routine, CIAOINIT

BEHO*1.1*007001
Will first run the Environment Check Routine, CIAOINIT

BEHO*1.1*026001
Will first run the Environment Check Routine, CIAOINIT

BEHO*1.1*027001
Will first run the Environment Check Routine, CIAOINIT

BEHO*1.1*028001
Will first run the Environment Check Routine, CIAOINIT

BEHO*1.1*017001
Will first run the Environment Check Routine, CIAOINIT

BEHO*1.1*035001
Will first run the Environment Check Routine, CIAOINIT

BEHO*1.1*022001
Will first run the Environment Check Routine, CIAOINIT

BEHO*1.1*029001
Will first run the Environment Check Routine, CIAOINIT

BEHO*1.1*030001
Will first run the Environment Check Routine, CIAOINIT

BEHO*1.1*040001
Will first run the Environment Check Routine, CIAOINIT

BEHO*1.1*018001
Will first run the Environment Check Routine, CIAOINIT

BEHO*1.1*005001
Will first run the Environment Check Routine, CIAOINIT

BEHO*1.1*031002
Will first run the Environment Check Routine, CIAOINIT

BEHO*1.1*016001
Will first run the Environment Check Routine, CIAOINIT

BEHO*1.1*032001
Will first run the Environment Check Routine, CIAOINIT

BEHO*1.1*019001
Will first run the Environment Check Routine, CIAOINIT

BEHO*1.1*009002
Will first run the Environment Check Routine, CIAOINIT

BEHO*1.1*033001
Will first run the Environment Check Routine, CIAOINIT

BEHO*1.1*002002

```

Will first run the Environment Check Routine, CIAOINIT

    BEHO*1.1*011001
Will first run the Environment Check Routine, CIAOINIT

    BEHO*1.1*004002
Will first run the Environment Check Routine, CIAOINIT

    BEHO*1.1*010001
Will first run the Environment Check Routine, CIAOINIT

    BEHO*1.1*025001
Will first run the Environment Check Routine, CIAOINIT

    BEHO*1.1*003001
Will first run the Environment Check Routine, CIAOINIT

    BEHO*1.1*036001
Will first run the Environment Check Routine, CIAOINIT

    BEHO*1.1*034001
Will first run the Environment Check Routine, CIAOINIT

    BEHO*1.1*015001
Will first run the Environment Check Routine, CIAOINIT

    BEHO*1.1*039001
Will first run the Environment Check Routine, CIAOINIT

    BEHO*1.1*024001
Will first run the Environment Check Routine, CIAOINIT

    BEHO*1.1*020001
Will first run the Environment Check Routine, CIAOINIT

    BEHO*1.1*021001
Will first run the Environment Check Routine, CIAOINIT

    BEHO*1.1*023001
Will first run the Environment Check Routine, CIAOINIT

    BEHO*1.1*006001
Will first run the Environment Check Routine, CIAOINIT

    BEHO*1.1*037001
Will first run the Environment Check Routine, CIAOINIT

    BEHO*1.1*001002
Will first run the Environment Check Routine, CIAOINIT

    BEHO*1.1*041001
Will first run the Environment Check Routine, CIAOINIT

    BEHO*1.1*042001
Will first run the Environment Check Routine, CIAOINIT

    BEHO*1.1*044001
Will first run the Environment Check Routine, CIAOINIT

    BGO*1.1*3
Use INSTALL NAME: EHR 1.1 to install this Distribution.

```

```

1      Load a Distribution
2      Verify Checksums in Transport Global
3      Print Transport Global
4      Compare Transport Global to Current System
5      Backup a Transport Global
6      Install Package(s)
      Restart Install of Package(s)
      Unload a Distribution
Select Installation Option: 6      Install Package(s)
Select INSTALL NAME: EHR 1.1      Loaded from Distribution
Loaded from Distribution 2/27/07@16:12:21

```


=> RPMS-EHR Version 1.1 ;Created on Feb 09, 2007@10:23:35

This Distribution was loaded on Feb 27, 2007@16:12:21 with header of
RPMS-EHR Version 1.1 ;Created on Feb 09, 2007@10:23:35
It consisted of the following Install(s):

EHR 1.1CIA UTILITIES 1.2CIA NETWORK COMPONENTS 1.1CIAN*1.1*001003
VUECENTRIC FRAMEWORK 1.1V2VUECENTRIC COMPONENTS 1.1BEH UTILITIES 1.2
BEH COMPONENTS 1.1 OR*3.0*1002CIAO*1.1*002001CIAO*1.1*004001CIAO*1.1*003001
CIAO*1.1*008001CIAO*1.1*009001CIAO*1.1*005001CIAO*1.1*006001BEHO*1.1*007001
BEHO*1.1*026001BEHO*1.1*027001BEHO*1.1*028001BEHO*1.1*017001BEHO*1.1*035001
BEHO*1.1*022001BEHO*1.1*029001BEHO*1.1*030001BEHO*1.1*040001BEHO*1.1*018001
BEHO*1.1*005001BEHO*1.1*031002BEHO*1.1*016001BEHO*1.1*032001BEHO*1.1*019001
BEHO*1.1*009002BEHO*1.1*033001BEHO*1.1*002002BEHO*1.1*011001BEHO*1.1*004002
BEHO*1.1*010001BEHO*1.1*025001BEHO*1.1*003001BEHO*1.1*036001BEHO*1.1*034001
BEHO*1.1*015001BEHO*1.1*039001BEHO*1.1*024001BEHO*1.1*020001BEHO*1.1*021001
BEHO*1.1*023001BEHO*1.1*006001BEHO*1.1*037001BEHO*1.1*001002BEHO*1.1*041001
BEHO*1.1*042001BEHO*1.1*044001 BGO*1.1*3
Checking Install for Package EHR 1.1
Will first run the Environment Check Routine, CIAVIN11

Install Questions for EHR 1.1

Checking Install for Package CIA UTILITIES 1.2

Install Questions for CIA UTILITIES 1.2

Checking Install for Package CIA NETWORK COMPONENTS 1.1

Install Questions for CIA NETWORK COMPONENTS 1.1

Checking Install for Package CIAN*1.1*001003
Will first run the Environment Check Routine, CIANBINI

One or more broker processes are currently running.

Do you wish to continue the installation? ☒

VUECENTRIC: Waiting for listener to stop.....Listener stopped on port 9202

Install Questions for CIAN*1.1*001003

Incoming Files:

8989.51 PARAMETER DEFINITION (including data)
Note: You already have the 'PARAMETER DEFINITION' File.
I will REPLACE your data with mine.

8989.52 PARAMETER TEMPLATE (including data)
Note: You already have the 'PARAMETER TEMPLATE' File.
I will REPLACE your data with mine.

19941.2 CIA AUTHENTICATION
Note: You already have the 'CIA AUTHENTICATION' File.

19941.21 CIA EVENT TYPE
Note: You already have the 'CIA EVENT TYPE' File.

19941.22 CIA LISTENER
Note: You already have the 'CIA LISTENER' File.

19941.23 CIA EVENT LOG
Note: You already have the 'CIA EVENT LOG' File.

Checking Install for Package VUECENTRIC FRAMEWORK 1.1V2
Will first run the Environment Check Routine, CIAVINIT

Install Questions for VUECENTRIC FRAMEWORK 1.1V2

Incoming Files:

3.5 DEVICE (including data)
Note: You already have the 'DEVICE' File.
I will MERGE your data with mine.

8989.51 PARAMETER DEFINITION (including data)
Note: You already have the 'PARAMETER DEFINITION' File.
I will REPLACE your data with mine.

8989.52 PARAMETER TEMPLATE (including data)
Note: You already have the 'PARAMETER TEMPLATE' File.
I will REPLACE your data with mine.

19930.2 VUECENTRIC OBJECT REGISTRY (including data)
Note: You already have the 'VUECENTRIC OBJECT REGISTRY' File.
I will OVERWRITE your data with mine.

19930.21 VUECENTRIC OBJECT CATEGORY (including data)
Note: You already have the 'VUECENTRIC OBJECT CATEGORY' File.
I will OVERWRITE your data with mine.

19930.3 VUECENTRIC TEMPLATE REGISTRY (including data)
Note: You already have the 'VUECENTRIC TEMPLATE REGISTRY' File.
I will REPLACE your data with mine.

19941.21 CIA EVENT TYPE (including data)
Note: You already have the 'CIA EVENT TYPE' File.
I will REPLACE your data with mine.

Incoming Mail Groups:

Enter the Coordinator for Mail Group 'VUECENTRIC TECH SUPPORT':
DKM IT SPECIALIST

USER, POWER

Checking Install for Package VUECENTRIC COMPONENTS 1.1

Install Questions for VUECENTRIC COMPONENTS 1.1

Checking Install for Package BEH UTILITIES 1.2

Install Questions for BEH UTILITIES 1.2

Checking Install for Package BEH COMPONENTS 1.1

Install Questions for BEH COMPONENTS 1.1

Checking Install for Package OR*3.0*1002
Will first run the Environment Check Routine, ORIN1002

Install Questions for OR*3.0*1002

Incoming Files:

101.24 OE/RR REPORT (including data)
Note: You already have the 'OE/RR REPORT' File.
I will OVERWRITE your data with mine.

101.41 ORDER DIALOG (including data)
Note: You already have the 'ORDER DIALOG' File.
I will OVERWRITE your data with mine.

Checking Install for Package CIAO*1.1*002001
Will first run the Environment Check Routine, CIAOINIT

Install Questions for CIAO*1.1*002001

Incoming Files:

8989.51 PARAMETER DEFINITION (including data)
Note: You already have the 'PARAMETER DEFINITION' File.
I will REPLACE your data with mine.

8989.52 PARAMETER TEMPLATE (including data)
Note: You already have the 'PARAMETER TEMPLATE' File.
I will REPLACE your data with mine.

19930.2 VUECENTRIC OBJECT REGISTRY (including data)
Note: You already have the 'VUECENTRIC OBJECT REGISTRY' File.
I will OVERWRITE your data with mine.

19930.3 VUECENTRIC TEMPLATE REGISTRY (including data)
Note: You already have the 'VUECENTRIC TEMPLATE REGISTRY' File.
I will OVERWRITE your data with mine.

19941.21 CIA EVENT TYPE (including data)
Note: You already have the 'CIA EVENT TYPE' File.
I will OVERWRITE your data with mine.

Checking Install for Package CIAO*1.1*004001
Will first run the Environment Check Routine, CIAOINIT

Install Questions for CIAO*1.1*004001

Incoming Files:

8989.51 PARAMETER DEFINITION (including data)
Note: You already have the 'PARAMETER DEFINITION' File.
I will REPLACE your data with mine.

8989.52 PARAMETER TEMPLATE (including data)
Note: You already have the 'PARAMETER TEMPLATE' File.
I will REPLACE your data with mine.

19930.2 VUECENTRIC OBJECT REGISTRY (including data)
Note: You already have the 'VUECENTRIC OBJECT REGISTRY' File.
I will OVERWRITE your data with mine.

19930.3 VUECENTRIC TEMPLATE REGISTRY (including data)
Note: You already have the 'VUECENTRIC TEMPLATE REGISTRY' File.
I will OVERWRITE your data with mine.

19941.21 CIA EVENT TYPE (including data)
Note: You already have the 'CIA EVENT TYPE' File.

I will OVERWRITE your data with mine.

Checking Install for Package CIAO*1.1*003001
Will first run the Environment Check Routine, CIAOINIT

Install Questions for CIAO*1.1*003001

Incoming Files:

8989.51 PARAMETER DEFINITION (including data)
Note: You already have the 'PARAMETER DEFINITION' File.
I will REPLACE your data with mine.

8989.52 PARAMETER TEMPLATE (including data)
Note: You already have the 'PARAMETER TEMPLATE' File.
I will REPLACE your data with mine.

19930.2 VUECENTRIC OBJECT REGISTRY (including data)
Note: You already have the 'VUECENTRIC OBJECT REGISTRY' File.
I will OVERWRITE your data with mine.

19930.3 VUECENTRIC TEMPLATE REGISTRY (including data)
Note: You already have the 'VUECENTRIC TEMPLATE REGISTRY' File.
I will OVERWRITE your data with mine.

19941.21 CIA EVENT TYPE (including data)
Note: You already have the 'CIA EVENT TYPE' File.
I will OVERWRITE your data with mine.

Checking Install for Package CIAO*1.1*008001
Will first run the Environment Check Routine, CIAOINIT

Install Questions for CIAO*1.1*008001

Incoming Files:

8989.51 PARAMETER DEFINITION (including data)
Note: You already have the 'PARAMETER DEFINITION' File.
I will REPLACE your data with mine.

8989.52 PARAMETER TEMPLATE (including data)
Note: You already have the 'PARAMETER TEMPLATE' File.
I will REPLACE your data with mine.

19930.2 VUECENTRIC OBJECT REGISTRY (including data)
Note: You already have the 'VUECENTRIC OBJECT REGISTRY' File.
I will OVERWRITE your data with mine.

19930.3 VUECENTRIC TEMPLATE REGISTRY (including data)
Note: You already have the 'VUECENTRIC TEMPLATE REGISTRY' File.
I will OVERWRITE your data with mine.

19941.21 CIA EVENT TYPE (including data)
Note: You already have the 'CIA EVENT TYPE' File.
I will OVERWRITE your data with mine.

Checking Install for Package CIAO*1.1*009001
Will first run the Environment Check Routine, CIAOINIT

Install Questions for CIAO*1.1*009001

Incoming Files:

8989.51 PARAMETER DEFINITION (including data)
Note: You already have the 'PARAMETER DEFINITION' File.
I will REPLACE your data with mine.

8989.52 PARAMETER TEMPLATE (including data)
Note: You already have the 'PARAMETER TEMPLATE' File.
I will REPLACE your data with mine.

19930.2 VUECENTRIC OBJECT REGISTRY (including data)
Note: You already have the 'VUECENTRIC OBJECT REGISTRY' File.
I will OVERWRITE your data with mine.

19930.21 VUECENTRIC OBJECT CATEGORY (including data)
Note: You already have the 'VUECENTRIC OBJECT CATEGORY' File.
I will OVERWRITE your data with mine.

19930.3 VUECENTRIC TEMPLATE REGISTRY (including data)
Note: You already have the 'VUECENTRIC TEMPLATE REGISTRY' File.
I will OVERWRITE your data with mine.

19941.21 CIA EVENT TYPE (including data)
Note: You already have the 'CIA EVENT TYPE' File.
I will OVERWRITE your data with mine.

Checking Install for Package CIAO*1.1*005001
Will first run the Environment Check Routine, CIAOINIT

Install Questions for CIAO*1.1*005001

Incoming Files:

8989.51 PARAMETER DEFINITION (including data)
Note: You already have the 'PARAMETER DEFINITION' File.
I will REPLACE your data with mine.

8989.52 PARAMETER TEMPLATE (including data)
Note: You already have the 'PARAMETER TEMPLATE' File.
I will REPLACE your data with mine.

19930.2 VUECENTRIC OBJECT REGISTRY (including data)
Note: You already have the 'VUECENTRIC OBJECT REGISTRY' File.
I will OVERWRITE your data with mine.

19930.3 VUECENTRIC TEMPLATE REGISTRY (including data)
Note: You already have the 'VUECENTRIC TEMPLATE REGISTRY' File.
I will OVERWRITE your data with mine.

19941.21 CIA EVENT TYPE (including data)
Note: You already have the 'CIA EVENT TYPE' File.
I will OVERWRITE your data with mine.

Checking Install for Package CIAO*1.1*006001
Will first run the Environment Check Routine, CIAOINIT

Install Questions for CIAO*1.1*006001

Incoming Files:

8989.51 PARAMETER DEFINITION (including data)
Note: You already have the 'PARAMETER DEFINITION' File.

I will REPLACE your data with mine.

8989.52 PARAMETER TEMPLATE (including data)
Note: You already have the 'PARAMETER TEMPLATE' File.
I will REPLACE your data with mine.

19930.2 VUECENTRIC OBJECT REGISTRY (including data)
Note: You already have the 'VUECENTRIC OBJECT REGISTRY' File.
I will OVERWRITE your data with mine.

19930.3 VUECENTRIC TEMPLATE REGISTRY (including data)
Note: You already have the 'VUECENTRIC TEMPLATE REGISTRY' File.
I will OVERWRITE your data with mine.

19941.21 CIA EVENT TYPE (including data)
Note: You already have the 'CIA EVENT TYPE' File.
I will OVERWRITE your data with mine.

Checking Install for Package BEHO*1.1*007001
Will first run the Environment Check Routine, CIAOINIT

Install Questions for BEHO*1.1*007001

Incoming Files:

8989.51 PARAMETER DEFINITION (including data)
Note: You already have the 'PARAMETER DEFINITION' File.
I will REPLACE your data with mine.

8989.52 PARAMETER TEMPLATE (including data)
Note: You already have the 'PARAMETER TEMPLATE' File.
I will REPLACE your data with mine.

19930.2 VUECENTRIC OBJECT REGISTRY (including data)
Note: You already have the 'VUECENTRIC OBJECT REGISTRY' File.
I will OVERWRITE your data with mine.

19930.3 VUECENTRIC TEMPLATE REGISTRY (including data)
Note: You already have the 'VUECENTRIC TEMPLATE REGISTRY' File.
I will OVERWRITE your data with mine.

19941.21 CIA EVENT TYPE (including data)
Note: You already have the 'CIA EVENT TYPE' File.
I will OVERWRITE your data with mine.

Checking Install for Package BEHO*1.1*026001
Will first run the Environment Check Routine, CIAOINIT

Install Questions for BEHO*1.1*026001

Incoming Files:

8989.51 PARAMETER DEFINITION (including data)
Note: You already have the 'PARAMETER DEFINITION' File.
I will REPLACE your data with mine.

8989.52 PARAMETER TEMPLATE (including data)
Note: You already have the 'PARAMETER TEMPLATE' File.
I will REPLACE your data with mine.

19930.2 VUECENTRIC OBJECT REGISTRY (including data)

Note: You already have the 'VUECENTRIC OBJECT REGISTRY' File.
I will OVERWRITE your data with mine.

19930.21 VUECENTRIC OBJECT CATEGORY (including data)
Note: You already have the 'VUECENTRIC OBJECT CATEGORY' File.
I will OVERWRITE your data with mine.

19930.3 VUECENTRIC TEMPLATE REGISTRY (including data)
Note: You already have the 'VUECENTRIC TEMPLATE REGISTRY' File.
I will OVERWRITE your data with mine.

19941.21 CIA EVENT TYPE (including data)
Note: You already have the 'CIA EVENT TYPE' File.
I will OVERWRITE your data with mine.

Checking Install for Package BEHO*1.1*027001
Will first run the Environment Check Routine, CIAOINIT

Install Questions for BEHO*1.1*027001

Incoming Files:

8989.51 PARAMETER DEFINITION (including data)
Note: You already have the 'PARAMETER DEFINITION' File.
I will REPLACE your data with mine.

8989.52 PARAMETER TEMPLATE (including data)
Note: You already have the 'PARAMETER TEMPLATE' File.
I will REPLACE your data with mine.

19930.2 VUECENTRIC OBJECT REGISTRY (including data)
Note: You already have the 'VUECENTRIC OBJECT REGISTRY' File.
I will OVERWRITE your data with mine.

19930.21 VUECENTRIC OBJECT CATEGORY (including data)
Note: You already have the 'VUECENTRIC OBJECT CATEGORY' File.
I will OVERWRITE your data with mine.

19930.3 VUECENTRIC TEMPLATE REGISTRY (including data)
Note: You already have the 'VUECENTRIC TEMPLATE REGISTRY' File.
I will OVERWRITE your data with mine.

19941.21 CIA EVENT TYPE (including data)
Note: You already have the 'CIA EVENT TYPE' File.
I will OVERWRITE your data with mine.

Checking Install for Package BEHO*1.1*028001
Will first run the Environment Check Routine, CIAOINIT

Install Questions for BEHO*1.1*028001

Incoming Files:

8989.51 PARAMETER DEFINITION (including data)
Note: You already have the 'PARAMETER DEFINITION' File.
I will REPLACE your data with mine.

8989.52 PARAMETER TEMPLATE (including data)
Note: You already have the 'PARAMETER TEMPLATE' File.
I will REPLACE your data with mine.

19930.2 VUECENTRIC OBJECT REGISTRY (including data)
Note: You already have the 'VUECENTRIC OBJECT REGISTRY' File.
I will OVERWRITE your data with mine.

19930.21 VUECENTRIC OBJECT CATEGORY (including data)
Note: You already have the 'VUECENTRIC OBJECT CATEGORY' File.
I will OVERWRITE your data with mine.

19930.3 VUECENTRIC TEMPLATE REGISTRY (including data)
Note: You already have the 'VUECENTRIC TEMPLATE REGISTRY' File.
I will OVERWRITE your data with mine.

19941.21 CIA EVENT TYPE (including data)
Note: You already have the 'CIA EVENT TYPE' File.
I will OVERWRITE your data with mine.

Checking Install for Package BEHO*1.1*017001
Will first run the Environment Check Routine, CIAOINIT

Install Questions for BEHO*1.1*017001

Incoming Files:

8989.51 PARAMETER DEFINITION (including data)
Note: You already have the 'PARAMETER DEFINITION' File.
I will REPLACE your data with mine.

8989.52 PARAMETER TEMPLATE (including data)
Note: You already have the 'PARAMETER TEMPLATE' File.
I will REPLACE your data with mine.

19930.2 VUECENTRIC OBJECT REGISTRY (including data)
Note: You already have the 'VUECENTRIC OBJECT REGISTRY' File.
I will OVERWRITE your data with mine.

19930.3 VUECENTRIC TEMPLATE REGISTRY (including data)
Note: You already have the 'VUECENTRIC TEMPLATE REGISTRY' File.
I will OVERWRITE your data with mine.

19941.21 CIA EVENT TYPE (including data)
Note: You already have the 'CIA EVENT TYPE' File.
I will OVERWRITE your data with mine.

Checking Install for Package BEHO*1.1*035001
Will first run the Environment Check Routine, CIAOINIT

Install Questions for BEHO*1.1*035001

Incoming Files:

8989.51 PARAMETER DEFINITION (including data)
Note: You already have the 'PARAMETER DEFINITION' File.
I will REPLACE your data with mine.

8989.52 PARAMETER TEMPLATE (including data)
Note: You already have the 'PARAMETER TEMPLATE' File.
I will REPLACE your data with mine.

19930.2 VUECENTRIC OBJECT REGISTRY (including data)
Note: You already have the 'VUECENTRIC OBJECT REGISTRY' File.
I will OVERWRITE your data with mine.

19930.21 VUECENTRIC OBJECT CATEGORY (including data)
Note: You already have the 'VUECENTRIC OBJECT CATEGORY' File.
I will OVERWRITE your data with mine.

19930.3 VUECENTRIC TEMPLATE REGISTRY (including data)
Note: You already have the 'VUECENTRIC TEMPLATE REGISTRY' File.
I will OVERWRITE your data with mine.

19941.21 CIA EVENT TYPE (including data)
Note: You already have the 'CIA EVENT TYPE' File.
I will OVERWRITE your data with mine.

Checking Install for Package BEHO*1.1*022001
Will first run the Environment Check Routine, CIAOINIT

Install Questions for BEHO*1.1*022001

Incoming Files:

8989.51 PARAMETER DEFINITION (including data)
Note: You already have the 'PARAMETER DEFINITION' File.
I will REPLACE your data with mine.

8989.52 PARAMETER TEMPLATE (including data)
Note: You already have the 'PARAMETER TEMPLATE' File.
I will REPLACE your data with mine.

19930.2 VUECENTRIC OBJECT REGISTRY (including data)
Note: You already have the 'VUECENTRIC OBJECT REGISTRY' File.
I will OVERWRITE your data with mine.

19930.3 VUECENTRIC TEMPLATE REGISTRY (including data)
Note: You already have the 'VUECENTRIC TEMPLATE REGISTRY' File.
I will OVERWRITE your data with mine.

19941.21 CIA EVENT TYPE (including data)
Note: You already have the 'CIA EVENT TYPE' File.
I will OVERWRITE your data with mine.

Checking Install for Package BEHO*1.1*029001
Will first run the Environment Check Routine, CIAOINIT

Install Questions for BEHO*1.1*029001

Incoming Files:

8989.51 PARAMETER DEFINITION (including data)
Note: You already have the 'PARAMETER DEFINITION' File.
I will REPLACE your data with mine.

8989.52 PARAMETER TEMPLATE (including data)
Note: You already have the 'PARAMETER TEMPLATE' File.
I will REPLACE your data with mine.

19930.2 VUECENTRIC OBJECT REGISTRY (including data)
Note: You already have the 'VUECENTRIC OBJECT REGISTRY' File.
I will OVERWRITE your data with mine.

19930.21 VUECENTRIC OBJECT CATEGORY (including data)
Note: You already have the 'VUECENTRIC OBJECT CATEGORY' File.

I will OVERWRITE your data with mine.

19930.3 VUECENTRIC TEMPLATE REGISTRY (including data)
Note: You already have the 'VUECENTRIC TEMPLATE REGISTRY' File.
I will OVERWRITE your data with mine.

19941.21 CIA EVENT TYPE (including data)
Note: You already have the 'CIA EVENT TYPE' File.
I will OVERWRITE your data with mine.

Checking Install for Package BEHO*1.1*030001
Will first run the Environment Check Routine, CIAOINIT

Install Questions for BEHO*1.1*030001

Incoming Files:

8989.51 PARAMETER DEFINITION (including data)
Note: You already have the 'PARAMETER DEFINITION' File.
I will REPLACE your data with mine.

8989.52 PARAMETER TEMPLATE (including data)
Note: You already have the 'PARAMETER TEMPLATE' File.
I will REPLACE your data with mine.

19930.2 VUECENTRIC OBJECT REGISTRY (including data)
Note: You already have the 'VUECENTRIC OBJECT REGISTRY' File.
I will OVERWRITE your data with mine.

19930.21 VUECENTRIC OBJECT CATEGORY (including data)
Note: You already have the 'VUECENTRIC OBJECT CATEGORY' File.
I will OVERWRITE your data with mine.

19930.3 VUECENTRIC TEMPLATE REGISTRY (including data)
Note: You already have the 'VUECENTRIC TEMPLATE REGISTRY' File.
I will OVERWRITE your data with mine.

19941.21 CIA EVENT TYPE (including data)
Note: You already have the 'CIA EVENT TYPE' File.
I will OVERWRITE your data with mine.

Checking Install for Package BEHO*1.1*040001
Will first run the Environment Check Routine, CIAOINIT

Install Questions for BEHO*1.1*040001

Incoming Files:

8925.1 TIU DOCUMENT DEFINITION (including data)
Note: You already have the 'TIU DOCUMENT DEFINITION' File.
I will OVERWRITE your data with mine.

8989.51 PARAMETER DEFINITION (including data)
Note: You already have the 'PARAMETER DEFINITION' File.
I will REPLACE your data with mine.

8989.52 PARAMETER TEMPLATE (including data)
Note: You already have the 'PARAMETER TEMPLATE' File.
I will REPLACE your data with mine.

19930.2 VUECENTRIC OBJECT REGISTRY (including data)

Note: You already have the 'VUECENTRIC OBJECT REGISTRY' File.
I will OVERWRITE your data with mine.

19930.3 VUECENTRIC TEMPLATE REGISTRY (including data)
Note: You already have the 'VUECENTRIC TEMPLATE REGISTRY' File.
I will OVERWRITE your data with mine.

19941.21 CIA EVENT TYPE (including data)
Note: You already have the 'CIA EVENT TYPE' File.
I will OVERWRITE your data with mine.

Incoming Mail Groups:

Enter the Coordinator for Mail Group 'BEHODC PROBLEM FILE': **USER,POWER** DK
M IT SPECIALIST

Checking Install for Package BEHO*1.1*018001
Will first run the Environment Check Routine, CIAOINIT

Install Questions for BEHO*1.1*018001

Incoming Files:

8989.51 PARAMETER DEFINITION (including data)
Note: You already have the 'PARAMETER DEFINITION' File.
I will REPLACE your data with mine.

8989.52 PARAMETER TEMPLATE (including data)
Note: You already have the 'PARAMETER TEMPLATE' File.
I will REPLACE your data with mine.

19930.2 VUECENTRIC OBJECT REGISTRY (including data)
Note: You already have the 'VUECENTRIC OBJECT REGISTRY' File.
I will OVERWRITE your data with mine.

19930.3 VUECENTRIC TEMPLATE REGISTRY (including data)
Note: You already have the 'VUECENTRIC TEMPLATE REGISTRY' File.
I will OVERWRITE your data with mine.

19941.21 CIA EVENT TYPE (including data)
Note: You already have the 'CIA EVENT TYPE' File.
I will OVERWRITE your data with mine.

Checking Install for Package BEHO*1.1*005001
Will first run the Environment Check Routine, CIAOINIT

Install Questions for BEHO*1.1*005001

Incoming Files:

101.24 OE/RR REPORT (including data)
Note: You already have the 'OE/RR REPORT' File.
I will OVERWRITE your data with mine.

8989.51 PARAMETER DEFINITION (including data)
Note: You already have the 'PARAMETER DEFINITION' File.
I will REPLACE your data with mine.

8989.52 PARAMETER TEMPLATE (including data)
Note: You already have the 'PARAMETER TEMPLATE' File.
I will REPLACE your data with mine.

19930.2 VUECENTRIC OBJECT REGISTRY (including data)
Note: You already have the 'VUECENTRIC OBJECT REGISTRY' File.
I will OVERWRITE your data with mine.

19930.21 VUECENTRIC OBJECT CATEGORY (including data)
Note: You already have the 'VUECENTRIC OBJECT CATEGORY' File.
I will OVERWRITE your data with mine.

19930.3 VUECENTRIC TEMPLATE REGISTRY (including data)
Note: You already have the 'VUECENTRIC TEMPLATE REGISTRY' File.
I will OVERWRITE your data with mine.

19941.21 CIA EVENT TYPE (including data)
Note: You already have the 'CIA EVENT TYPE' File.
I will OVERWRITE your data with mine.

Checking Install for Package BEHO*1.1*031002
Will first run the Environment Check Routine, CIAOINIT

Install Questions for BEHO*1.1*031002

Incoming Files:

8989.51 PARAMETER DEFINITION (including data)
Note: You already have the 'PARAMETER DEFINITION' File.
I will REPLACE your data with mine.

8989.52 PARAMETER TEMPLATE (including data)
Note: You already have the 'PARAMETER TEMPLATE' File.
I will REPLACE your data with mine.

19930.2 VUECENTRIC OBJECT REGISTRY (including data)
Note: You already have the 'VUECENTRIC OBJECT REGISTRY' File.
I will OVERWRITE your data with mine.

19930.21 VUECENTRIC OBJECT CATEGORY (including data)
Note: You already have the 'VUECENTRIC OBJECT CATEGORY' File.
I will OVERWRITE your data with mine.

19930.3 VUECENTRIC TEMPLATE REGISTRY (including data)
Note: You already have the 'VUECENTRIC TEMPLATE REGISTRY' File.
I will OVERWRITE your data with mine.

19941.21 CIA EVENT TYPE (including data)
Note: You already have the 'CIA EVENT TYPE' File.
I will OVERWRITE your data with mine.

Checking Install for Package BEHO*1.1*016001
Will first run the Environment Check Routine, CIAOINIT

Install Questions for BEHO*1.1*016001

Incoming Files:

8989.51 PARAMETER DEFINITION (including data)
Note: You already have the 'PARAMETER DEFINITION' File.
I will REPLACE your data with mine.

8989.52 PARAMETER TEMPLATE (including data)
Note: You already have the 'PARAMETER TEMPLATE' File.

I will REPLACE your data with mine.

19930.2 VUECENTRIC OBJECT REGISTRY (including data)
Note: You already have the 'VUECENTRIC OBJECT REGISTRY' File.
I will OVERWRITE your data with mine.

19930.3 VUECENTRIC TEMPLATE REGISTRY (including data)
Note: You already have the 'VUECENTRIC TEMPLATE REGISTRY' File.
I will OVERWRITE your data with mine.

19941.21 CIA EVENT TYPE (including data)
Note: You already have the 'CIA EVENT TYPE' File.
I will OVERWRITE your data with mine.

Checking Install for Package BEHO*1.1*032001
Will first run the Environment Check Routine, CIAOINIT

Install Questions for BEHO*1.1*032001

Incoming Files:

8989.51 PARAMETER DEFINITION (including data)
Note: You already have the 'PARAMETER DEFINITION' File.
I will REPLACE your data with mine.

8989.52 PARAMETER TEMPLATE (including data)
Note: You already have the 'PARAMETER TEMPLATE' File.
I will REPLACE your data with mine.

19930.2 VUECENTRIC OBJECT REGISTRY (including data)
Note: You already have the 'VUECENTRIC OBJECT REGISTRY' File.
I will OVERWRITE your data with mine.

19930.21 VUECENTRIC OBJECT CATEGORY (including data)
Note: You already have the 'VUECENTRIC OBJECT CATEGORY' File.
I will OVERWRITE your data with mine.

19930.3 VUECENTRIC TEMPLATE REGISTRY (including data)
Note: You already have the 'VUECENTRIC TEMPLATE REGISTRY' File.
I will OVERWRITE your data with mine.

19941.21 CIA EVENT TYPE (including data)
Note: You already have the 'CIA EVENT TYPE' File.
I will OVERWRITE your data with mine.

Checking Install for Package BEHO*1.1*019001
Will first run the Environment Check Routine, CIAOINIT

Install Questions for BEHO*1.1*019001

Incoming Files:

8989.51 PARAMETER DEFINITION (including data)
Note: You already have the 'PARAMETER DEFINITION' File.
I will REPLACE your data with mine.

8989.52 PARAMETER TEMPLATE (including data)
Note: You already have the 'PARAMETER TEMPLATE' File.
I will REPLACE your data with mine.

19930.2 VUECENTRIC OBJECT REGISTRY (including data)
Note: You already have the 'VUECENTRIC OBJECT REGISTRY' File.
I will OVERWRITE your data with mine.

19930.3 VUECENTRIC TEMPLATE REGISTRY (including data)
Note: You already have the 'VUECENTRIC TEMPLATE REGISTRY' File.
I will OVERWRITE your data with mine.

19941.21 CIA EVENT TYPE (including data)
Note: You already have the 'CIA EVENT TYPE' File.
I will OVERWRITE your data with mine.

Checking Install for Package BEHO*1.1*009002
Will first run the Environment Check Routine, CIAOINIT

Install Questions for BEHO*1.1*009002

Incoming Files:

8989.51 PARAMETER DEFINITION (including data)
Note: You already have the 'PARAMETER DEFINITION' File.
I will REPLACE your data with mine.

8989.52 PARAMETER TEMPLATE (including data)
Note: You already have the 'PARAMETER TEMPLATE' File.
I will REPLACE your data with mine.

19930.2 VUECENTRIC OBJECT REGISTRY (including data)
Note: You already have the 'VUECENTRIC OBJECT REGISTRY' File.
I will OVERWRITE your data with mine.

19930.3 VUECENTRIC TEMPLATE REGISTRY (including data)
Note: You already have the 'VUECENTRIC TEMPLATE REGISTRY' File.
I will OVERWRITE your data with mine.

19941.21 CIA EVENT TYPE (including data)
Note: You already have the 'CIA EVENT TYPE' File.
I will OVERWRITE your data with mine.

Checking Install for Package BEHO*1.1*033001
Will first run the Environment Check Routine, CIAOINIT

Install Questions for BEHO*1.1*033001

Incoming Files:

8989.51 PARAMETER DEFINITION (including data)
Note: You already have the 'PARAMETER DEFINITION' File.
I will REPLACE your data with mine.

8989.52 PARAMETER TEMPLATE (including data)
Note: You already have the 'PARAMETER TEMPLATE' File.
I will REPLACE your data with mine.

19930.2 VUECENTRIC OBJECT REGISTRY (including data)
Note: You already have the 'VUECENTRIC OBJECT REGISTRY' File.
I will OVERWRITE your data with mine.

19930.21 VUECENTRIC OBJECT CATEGORY (including data)
Note: You already have the 'VUECENTRIC OBJECT CATEGORY' File.
I will OVERWRITE your data with mine.

19930.3 VUECENTRIC TEMPLATE REGISTRY (including data)
Note: You already have the 'VUECENTRIC TEMPLATE REGISTRY' File.
I will OVERWRITE your data with mine.

19941.21 CIA EVENT TYPE (including data)
Note: You already have the 'CIA EVENT TYPE' File.
I will OVERWRITE your data with mine.

Checking Install for Package BEHO*1.1*002002
Will first run the Environment Check Routine, CIAOINIT

Install Questions for BEHO*1.1*002002

Incoming Files:

100.9 OE/RR NOTIFICATIONS (including data)
Note: You already have the 'OE/RR NOTIFICATIONS' File.
I will OVERWRITE your data with mine.

8989.51 PARAMETER DEFINITION (including data)
Note: You already have the 'PARAMETER DEFINITION' File.
I will REPLACE your data with mine.

8989.52 PARAMETER TEMPLATE (including data)
Note: You already have the 'PARAMETER TEMPLATE' File.
I will REPLACE your data with mine.

19930.2 VUECENTRIC OBJECT REGISTRY (including data)
Note: You already have the 'VUECENTRIC OBJECT REGISTRY' File.
I will OVERWRITE your data with mine.

19930.3 VUECENTRIC TEMPLATE REGISTRY (including data)
Note: You already have the 'VUECENTRIC TEMPLATE REGISTRY' File.
I will OVERWRITE your data with mine.

19941.21 CIA EVENT TYPE (including data)
Note: You already have the 'CIA EVENT TYPE' File.
I will OVERWRITE your data with mine.

90460.021 BEH ALERT CONTROL (including data)
Note: You already have the 'BEH ALERT CONTROL' File.
I will OVERWRITE your data with mine.

90460.022 BEH ALERT SCHEDULING
Note: You already have the 'BEH ALERT SCHEDULING' File.

Checking Install for Package BEHO*1.1*011001
Will first run the Environment Check Routine, CIAOINIT

Install Questions for BEHO*1.1*011001

Incoming Files:

8989.51 PARAMETER DEFINITION (including data)
Note: You already have the 'PARAMETER DEFINITION' File.
I will REPLACE your data with mine.

8989.52 PARAMETER TEMPLATE (including data)
Note: You already have the 'PARAMETER TEMPLATE' File.

I will REPLACE your data with mine.

19930.2 VUECENTRIC OBJECT REGISTRY (including data)
Note: You already have the 'VUECENTRIC OBJECT REGISTRY' File.
I will OVERWRITE your data with mine.

19930.3 VUECENTRIC TEMPLATE REGISTRY (including data)
Note: You already have the 'VUECENTRIC TEMPLATE REGISTRY' File.
I will OVERWRITE your data with mine.

19941.21 CIA EVENT TYPE (including data)
Note: You already have the 'CIA EVENT TYPE' File.
I will OVERWRITE your data with mine.

Checking Install for Package BEHO*1.1*004002
Will first run the Environment Check Routine, CIAOINIT

Install Questions for BEHO*1.1*004002

Incoming Files:

8989.51 PARAMETER DEFINITION (including data)
Note: You already have the 'PARAMETER DEFINITION' File.
I will REPLACE your data with mine.

8989.52 PARAMETER TEMPLATE (including data)
Note: You already have the 'PARAMETER TEMPLATE' File.
I will REPLACE your data with mine.

19930.2 VUECENTRIC OBJECT REGISTRY (including data)
Note: You already have the 'VUECENTRIC OBJECT REGISTRY' File.
I will OVERWRITE your data with mine.

19930.3 VUECENTRIC TEMPLATE REGISTRY (including data)
Note: You already have the 'VUECENTRIC TEMPLATE REGISTRY' File.
I will OVERWRITE your data with mine.

19941.21 CIA EVENT TYPE (including data)
Note: You already have the 'CIA EVENT TYPE' File.
I will OVERWRITE your data with mine.

90460.03 BEH PATIENT LIST (including data)
Note: You already have the 'BEH PATIENT LIST' File.
I will REPLACE your data with mine.

Checking Install for Package BEHO*1.1*010001
Will first run the Environment Check Routine, CIAOINIT

Install Questions for BEHO*1.1*010001

Incoming Files:

8989.51 PARAMETER DEFINITION (including data)
Note: You already have the 'PARAMETER DEFINITION' File.
I will REPLACE your data with mine.

8989.52 PARAMETER TEMPLATE (including data)
Note: You already have the 'PARAMETER TEMPLATE' File.
I will REPLACE your data with mine.

19930.2 VUECENTRIC OBJECT REGISTRY (including data)
Note: You already have the 'VUECENTRIC OBJECT REGISTRY' File.
I will OVERWRITE your data with mine.

19930.3 VUECENTRIC TEMPLATE REGISTRY (including data)
Note: You already have the 'VUECENTRIC TEMPLATE REGISTRY' File.
I will OVERWRITE your data with mine.

19941.21 CIA EVENT TYPE (including data)
Note: You already have the 'CIA EVENT TYPE' File.
I will OVERWRITE your data with mine.

Checking Install for Package BEHO*1.1*025001
Will first run the Environment Check Routine, CIAOINIT

Install Questions for BEHO*1.1*025001

Incoming Files:

8989.51 PARAMETER DEFINITION (including data)
Note: You already have the 'PARAMETER DEFINITION' File.
I will REPLACE your data with mine.

8989.52 PARAMETER TEMPLATE (including data)
Note: You already have the 'PARAMETER TEMPLATE' File.
I will REPLACE your data with mine.

19930.2 VUECENTRIC OBJECT REGISTRY (including data)
Note: You already have the 'VUECENTRIC OBJECT REGISTRY' File.
I will OVERWRITE your data with mine.

19930.3 VUECENTRIC TEMPLATE REGISTRY (including data)
Note: You already have the 'VUECENTRIC TEMPLATE REGISTRY' File.
I will OVERWRITE your data with mine.

19941.21 CIA EVENT TYPE (including data)
Note: You already have the 'CIA EVENT TYPE' File.
I will OVERWRITE your data with mine.

Checking Install for Package BEHO*1.1*003001
Will first run the Environment Check Routine, CIAOINIT

Install Questions for BEHO*1.1*003001

Incoming Files:

8989.51 PARAMETER DEFINITION (including data)
Note: You already have the 'PARAMETER DEFINITION' File.
I will REPLACE your data with mine.

8989.52 PARAMETER TEMPLATE (including data)
Note: You already have the 'PARAMETER TEMPLATE' File.
I will REPLACE your data with mine.

19930.2 VUECENTRIC OBJECT REGISTRY (including data)
Note: You already have the 'VUECENTRIC OBJECT REGISTRY' File.
I will OVERWRITE your data with mine.

19930.3 VUECENTRIC TEMPLATE REGISTRY (including data)
Note: You already have the 'VUECENTRIC TEMPLATE REGISTRY' File.
I will OVERWRITE your data with mine.

19941.21 CIA EVENT TYPE (including data)
Note: You already have the 'CIA EVENT TYPE' File.
I will OVERWRITE your data with mine.

Checking Install for Package BEHO*1.1*036001
Will first run the Environment Check Routine, CIAOINIT

Install Questions for BEHO*1.1*036001

Incoming Files:

8989.51 PARAMETER DEFINITION (including data)
Note: You already have the 'PARAMETER DEFINITION' File.
I will REPLACE your data with mine.

8989.52 PARAMETER TEMPLATE (including data)
Note: You already have the 'PARAMETER TEMPLATE' File.
I will REPLACE your data with mine.

19930.2 VUECENTRIC OBJECT REGISTRY (including data)
Note: You already have the 'VUECENTRIC OBJECT REGISTRY' File.
I will OVERWRITE your data with mine.

19930.21 VUECENTRIC OBJECT CATEGORY (including data)
Note: You already have the 'VUECENTRIC OBJECT CATEGORY' File.
I will OVERWRITE your data with mine.

19930.3 VUECENTRIC TEMPLATE REGISTRY (including data)
Note: You already have the 'VUECENTRIC TEMPLATE REGISTRY' File.
I will OVERWRITE your data with mine.

19941.21 CIA EVENT TYPE (including data)
Note: You already have the 'CIA EVENT TYPE' File.
I will OVERWRITE your data with mine.

Checking Install for Package BEHO*1.1*034001
Will first run the Environment Check Routine, CIAOINIT

Install Questions for BEHO*1.1*034001

Incoming Files:

8989.51 PARAMETER DEFINITION (including data)
Note: You already have the 'PARAMETER DEFINITION' File.
I will REPLACE your data with mine.

8989.52 PARAMETER TEMPLATE (including data)
Note: You already have the 'PARAMETER TEMPLATE' File.
I will REPLACE your data with mine.

19930.2 VUECENTRIC OBJECT REGISTRY (including data)
Note: You already have the 'VUECENTRIC OBJECT REGISTRY' File.
I will OVERWRITE your data with mine.

19930.21 VUECENTRIC OBJECT CATEGORY (including data)
Note: You already have the 'VUECENTRIC OBJECT CATEGORY' File.
I will OVERWRITE your data with mine.

19930.3 VUECENTRIC TEMPLATE REGISTRY (including data)
Note: You already have the 'VUECENTRIC TEMPLATE REGISTRY' File.

I will OVERWRITE your data with mine.

19941.21 CIA EVENT TYPE (including data)
Note: You already have the 'CIA EVENT TYPE' File.
I will OVERWRITE your data with mine.

Checking Install for Package BEHO*1.1*015001
Will first run the Environment Check Routine, CIAOINIT

Install Questions for BEHO*1.1*015001

Incoming Files:

8989.51 PARAMETER DEFINITION (including data)
Note: You already have the 'PARAMETER DEFINITION' File.
I will REPLACE your data with mine.

8989.52 PARAMETER TEMPLATE (including data)
Note: You already have the 'PARAMETER TEMPLATE' File.
I will REPLACE your data with mine.

19930.2 VUECENTRIC OBJECT REGISTRY (including data)
Note: You already have the 'VUECENTRIC OBJECT REGISTRY' File.
I will OVERWRITE your data with mine.

19930.3 VUECENTRIC TEMPLATE REGISTRY (including data)
Note: You already have the 'VUECENTRIC TEMPLATE REGISTRY' File.
I will OVERWRITE your data with mine.

19941.21 CIA EVENT TYPE (including data)
Note: You already have the 'CIA EVENT TYPE' File.
I will OVERWRITE your data with mine.

Checking Install for Package BEHO*1.1*039001
Will first run the Environment Check Routine, CIAOINIT

Install Questions for BEHO*1.1*039001

Incoming Files:

8989.51 PARAMETER DEFINITION (including data)
Note: You already have the 'PARAMETER DEFINITION' File.
I will REPLACE your data with mine.

8989.52 PARAMETER TEMPLATE (including data)
Note: You already have the 'PARAMETER TEMPLATE' File.
I will REPLACE your data with mine.

19930.2 VUECENTRIC OBJECT REGISTRY (including data)
Note: You already have the 'VUECENTRIC OBJECT REGISTRY' File.
I will OVERWRITE your data with mine.

19930.3 VUECENTRIC TEMPLATE REGISTRY (including data)
Note: You already have the 'VUECENTRIC TEMPLATE REGISTRY' File.
I will OVERWRITE your data with mine.

19941.21 CIA EVENT TYPE (including data)
Note: You already have the 'CIA EVENT TYPE' File.
I will OVERWRITE your data with mine.

Checking Install for Package BEHO*1.1*024001

Will first run the Environment Check Routine, CIAOINIT

Install Questions for BEHO*1.1*024001

Incoming Files:

8989.51 PARAMETER DEFINITION (including data)
Note: You already have the 'PARAMETER DEFINITION' File.
I will REPLACE your data with mine.

8989.52 PARAMETER TEMPLATE (including data)
Note: You already have the 'PARAMETER TEMPLATE' File.
I will REPLACE your data with mine.

19930.2 VUECENTRIC OBJECT REGISTRY (including data)
Note: You already have the 'VUECENTRIC OBJECT REGISTRY' File.
I will OVERWRITE your data with mine.

19930.3 VUECENTRIC TEMPLATE REGISTRY (including data)
Note: You already have the 'VUECENTRIC TEMPLATE REGISTRY' File.
I will OVERWRITE your data with mine.

19941.21 CIA EVENT TYPE (including data)
Note: You already have the 'CIA EVENT TYPE' File.
I will OVERWRITE your data with mine.

Checking Install for Package BEHO*1.1*020001
Will first run the Environment Check Routine, CIAOINIT

Install Questions for BEHO*1.1*020001

Incoming Files:

8989.51 PARAMETER DEFINITION (including data)
Note: You already have the 'PARAMETER DEFINITION' File.
I will REPLACE your data with mine.

8989.52 PARAMETER TEMPLATE (including data)
Note: You already have the 'PARAMETER TEMPLATE' File.
I will REPLACE your data with mine.

19930.2 VUECENTRIC OBJECT REGISTRY (including data)
Note: You already have the 'VUECENTRIC OBJECT REGISTRY' File.
I will OVERWRITE your data with mine.

19930.3 VUECENTRIC TEMPLATE REGISTRY (including data)
Note: You already have the 'VUECENTRIC TEMPLATE REGISTRY' File.
I will OVERWRITE your data with mine.

19941.21 CIA EVENT TYPE (including data)
Note: You already have the 'CIA EVENT TYPE' File.
I will OVERWRITE your data with mine.

Checking Install for Package BEHO*1.1*021001
Will first run the Environment Check Routine, CIAOINIT

Install Questions for BEHO*1.1*021001

Incoming Files:

8989.51 PARAMETER DEFINITION (including data)
Note: You already have the 'PARAMETER DEFINITION' File.
I will REPLACE your data with mine.

8989.52 PARAMETER TEMPLATE (including data)
Note: You already have the 'PARAMETER TEMPLATE' File.
I will REPLACE your data with mine.

19930.2 VUECENTRIC OBJECT REGISTRY (including data)
Note: You already have the 'VUECENTRIC OBJECT REGISTRY' File.
I will OVERWRITE your data with mine.

19930.3 VUECENTRIC TEMPLATE REGISTRY (including data)
Note: You already have the 'VUECENTRIC TEMPLATE REGISTRY' File.
I will OVERWRITE your data with mine.

19941.21 CIA EVENT TYPE (including data)
Note: You already have the 'CIA EVENT TYPE' File.
I will OVERWRITE your data with mine.

Checking Install for Package BEHO*1.1*023001
Will first run the Environment Check Routine, CIAOINIT

Install Questions for BEHO*1.1*023001

Incoming Files:

8989.51 PARAMETER DEFINITION (including data)
Note: You already have the 'PARAMETER DEFINITION' File.
I will REPLACE your data with mine.

8989.52 PARAMETER TEMPLATE (including data)
Note: You already have the 'PARAMETER TEMPLATE' File.
I will REPLACE your data with mine.

19930.2 VUECENTRIC OBJECT REGISTRY (including data)
Note: You already have the 'VUECENTRIC OBJECT REGISTRY' File.
I will OVERWRITE your data with mine.

19930.21 VUECENTRIC OBJECT CATEGORY (including data)
Note: You already have the 'VUECENTRIC OBJECT CATEGORY' File.
I will OVERWRITE your data with mine.

19930.3 VUECENTRIC TEMPLATE REGISTRY (including data)
Note: You already have the 'VUECENTRIC TEMPLATE REGISTRY' File.
I will OVERWRITE your data with mine.

19941.21 CIA EVENT TYPE (including data)
Note: You already have the 'CIA EVENT TYPE' File.
I will OVERWRITE your data with mine.

Checking Install for Package BEHO*1.1*006001
Will first run the Environment Check Routine, CIAOINIT

Install Questions for BEHO*1.1*006001

Incoming Files:

8989.51 PARAMETER DEFINITION (including data)
Note: You already have the 'PARAMETER DEFINITION' File.

I will REPLACE your data with mine.

8989.52 PARAMETER TEMPLATE (including data)
Note: You already have the 'PARAMETER TEMPLATE' File.
I will REPLACE your data with mine.

19930.2 VUECENTRIC OBJECT REGISTRY (including data)
Note: You already have the 'VUECENTRIC OBJECT REGISTRY' File.
I will OVERWRITE your data with mine.

19930.3 VUECENTRIC TEMPLATE REGISTRY (including data)
Note: You already have the 'VUECENTRIC TEMPLATE REGISTRY' File.
I will OVERWRITE your data with mine.

19941.21 CIA EVENT TYPE (including data)
Note: You already have the 'CIA EVENT TYPE' File.
I will OVERWRITE your data with mine.

Checking Install for Package BEHO*1.1*037001
Will first run the Environment Check Routine, CIAOINIT

Install Questions for BEHO*1.1*037001

Incoming Files:

8989.51 PARAMETER DEFINITION (including data)
Note: You already have the 'PARAMETER DEFINITION' File.
I will REPLACE your data with mine.

8989.52 PARAMETER TEMPLATE (including data)
Note: You already have the 'PARAMETER TEMPLATE' File.
I will REPLACE your data with mine.

19930.2 VUECENTRIC OBJECT REGISTRY (including data)
Note: You already have the 'VUECENTRIC OBJECT REGISTRY' File.
I will OVERWRITE your data with mine.

19930.21 VUECENTRIC OBJECT CATEGORY (including data)
Note: You already have the 'VUECENTRIC OBJECT CATEGORY' File.
I will OVERWRITE your data with mine.

19930.3 VUECENTRIC TEMPLATE REGISTRY (including data)
Note: You already have the 'VUECENTRIC TEMPLATE REGISTRY' File.
I will OVERWRITE your data with mine.

19941.21 CIA EVENT TYPE (including data)
Note: You already have the 'CIA EVENT TYPE' File.
I will OVERWRITE your data with mine.

Checking Install for Package BEHO*1.1*001002
Will first run the Environment Check Routine, CIAOINIT

Install Questions for BEHO*1.1*001002

Incoming Files:

8989.51 PARAMETER DEFINITION (including data)
Note: You already have the 'PARAMETER DEFINITION' File.
I will REPLACE your data with mine.

8989.52 PARAMETER TEMPLATE (including data)

Note: You already have the 'PARAMETER TEMPLATE' File.
I will REPLACE your data with mine.

19930.2 VUECENTRIC OBJECT REGISTRY (including data)
Note: You already have the 'VUECENTRIC OBJECT REGISTRY' File.
I will OVERWRITE your data with mine.

19930.3 VUECENTRIC TEMPLATE REGISTRY (including data)
Note: You already have the 'VUECENTRIC TEMPLATE REGISTRY' File.
I will OVERWRITE your data with mine.

19941.21 CIA EVENT TYPE (including data)
Note: You already have the 'CIA EVENT TYPE' File.
I will OVERWRITE your data with mine.

90460.01 BEH MEASUREMENT CONTROL (including data)
Note: You already have the 'BEH MEASUREMENT CONTROL' File.
I will OVERWRITE your data with mine.

Checking Install for Package BEHO*1.1*041001
Will first run the Environment Check Routine, CIAOINIT

Install Questions for BEHO*1.1*041001

Incoming Files:

8989.51 PARAMETER DEFINITION (including data)
Note: You already have the 'PARAMETER DEFINITION' File.
I will REPLACE your data with mine.

8989.52 PARAMETER TEMPLATE (including data)
Note: You already have the 'PARAMETER TEMPLATE' File.
I will REPLACE your data with mine.

19930.2 VUECENTRIC OBJECT REGISTRY (including data)
Note: You already have the 'VUECENTRIC OBJECT REGISTRY' File.
I will OVERWRITE your data with mine.

19930.21 VUECENTRIC OBJECT CATEGORY (including data)
Note: You already have the 'VUECENTRIC OBJECT CATEGORY' File.
I will OVERWRITE your data with mine.

19930.3 VUECENTRIC TEMPLATE REGISTRY (including data)
Note: You already have the 'VUECENTRIC TEMPLATE REGISTRY' File.
I will OVERWRITE your data with mine.

19941.21 CIA EVENT TYPE (including data)
Note: You already have the 'CIA EVENT TYPE' File.
I will OVERWRITE your data with mine.

Checking Install for Package BEHO*1.1*042001
Will first run the Environment Check Routine, CIAOINIT

Install Questions for BEHO*1.1*042001

Incoming Files:

8989.51 PARAMETER DEFINITION (including data)
Note: You already have the 'PARAMETER DEFINITION' File.
I will REPLACE your data with mine.

8989.52 PARAMETER TEMPLATE (including data)
Note: You already have the 'PARAMETER TEMPLATE' File.
I will REPLACE your data with mine.

19930.2 VUECENTRIC OBJECT REGISTRY (including data)
Note: You already have the 'VUECENTRIC OBJECT REGISTRY' File.
I will OVERWRITE your data with mine.

19930.21 VUECENTRIC OBJECT CATEGORY (including data)
Note: You already have the 'VUECENTRIC OBJECT CATEGORY' File.
I will OVERWRITE your data with mine.

19930.3 VUECENTRIC TEMPLATE REGISTRY (including data)
Note: You already have the 'VUECENTRIC TEMPLATE REGISTRY' File.
I will OVERWRITE your data with mine.

19941.21 CIA EVENT TYPE (including data)
Note: You already have the 'CIA EVENT TYPE' File.
I will OVERWRITE your data with mine.

Checking Install for Package BEHO*1.1*044001
Will first run the Environment Check Routine, CIAOINIT

Install Questions for BEHO*1.1*044001

Incoming Files:

8989.51 PARAMETER DEFINITION (including data)
Note: You already have the 'PARAMETER DEFINITION' File.
I will REPLACE your data with mine.

8989.52 PARAMETER TEMPLATE (including data)
Note: You already have the 'PARAMETER TEMPLATE' File.
I will REPLACE your data with mine.

19930.2 VUECENTRIC OBJECT REGISTRY (including data)
Note: You already have the 'VUECENTRIC OBJECT REGISTRY' File.
I will OVERWRITE your data with mine.

19930.21 VUECENTRIC OBJECT CATEGORY (including data)
Note: You already have the 'VUECENTRIC OBJECT CATEGORY' File.
I will OVERWRITE your data with mine.

19930.3 VUECENTRIC TEMPLATE REGISTRY (including data)
Note: You already have the 'VUECENTRIC TEMPLATE REGISTRY' File.
I will OVERWRITE your data with mine.

19941.21 CIA EVENT TYPE (including data)
Note: You already have the 'CIA EVENT TYPE' File.
I will OVERWRITE your data with mine.

Checking Install for Package BGO*1.1*3

Install Questions for BGO*1.1*3

Incoming Files:

8989.51 PARAMETER DEFINITION (including data)
Note: You already have the 'PARAMETER DEFINITION' File.
I will REPLACE your data with mine.

8989.52 PARAMETER TEMPLATE (including data)
Note: You already have the 'PARAMETER TEMPLATE' File.
I will REPLACE your data with mine.

19930.2 VUECENTRIC OBJECT REGISTRY (including data)
Note: You already have the 'VUECENTRIC OBJECT REGISTRY' File.
I will OVERWRITE your data with mine.

19930.21 VUECENTRIC OBJECT CATEGORY (including data)
Note: You already have the 'VUECENTRIC OBJECT CATEGORY' File.
I will OVERWRITE your data with mine.

19930.3 VUECENTRIC TEMPLATE REGISTRY (including data)
Note: You already have the 'VUECENTRIC TEMPLATE REGISTRY' File.
I will OVERWRITE your data with mine.

19941.21 CIA EVENT TYPE (including data)
Note: You already have the 'CIA EVENT TYPE' File.
I will OVERWRITE your data with mine.

90362.2 BGO CHIEF COMPLAINT PICK LIST (including data)
Note: You already have the 'BGO CHIEF COMPLAINT PICK LIST' File.
Data will NOT be added.

90362.21 BGO WEB LINKS

90362.22 BGO PROBLEM PRIORITY

90362.23 BGO WEB CATEGORY

90362.24 BGO WEB REFERENCE SITES (including data)

90362.31 BGO CPT PREFERENCES (including data)
Note: You already have the 'BGO CPT PREFERENCES' File.
I will REPLACE your data with mine.

90362.35 BGO ICD PREFERENCES
Note: You already have the 'BGO ICD PREFERENCES' File.

90362.36 BGO ED TOPIC PREFERENCES

Enter the Device you want to print the Install messages.
Enter a '^' to abort the install.

DEVICE: HOME// <enter> CONSOLE
Install Started for EHR 1.1 :
Feb 27, 2007@16:12:39

Build Distribution Date: Feb 09, 2007

Installing Routines:
Feb 27, 2007@16:12:39

Running Pre-Install Routine: PRE^CIAVIN11

Updating EHR Parameters...

Updating parameter CIANB AUTHENTICATION... OK

Updating parameter CIANB POLLING INTERVAL... OK

Updating parameter CIANB RESOURCE DEVICE COUNT... OK

Updating parameter CIANB RESOURCE DEVICE SLOTS... OK

Updating parameter CIAOCP AC DEFAULT TYPE... OK

Updating parameter CIAOCP DC DEFAULT TYPE... OK

Updating parameter CIAOCVVM TEMPLATE... OK

Updating parameter CIAOCVVM USE VMSR... OK

Updating parameter CIAOCVVM VITAL LIST... OK

Updating parameter CIAOHSM HEALTH SUMMARY LIST... Nothing to change.

Updating parameter CIAOTIUD ARCHIVE FOLDER... OK

Updating parameter CIAOTIUD DICTATION NOTE TITLES... OK

Updating parameter CIAOTIUD MAXIMUM LINES... OK

Updating parameter CIAOTIUD PROBLEM FOLDER... OK

Updating parameter CIAOTIUD SOURCE FOLDER... OK

Updating parameter CIAOTIUQ QNOTES... Nothing to change.

Updating parameter CIAOTIUQ QNOTES MODIFY... OK

Updating parameter CIAOW EDIT RACE... OK

Updating parameter CIAOWMR GR DEFAULT SORT ITEM... OK

Updating parameter CIAVCXEN CREATE VISIT... OK

Updating parameter CIAVCXEN DEFAULT LOCATION... OK

Updating parameter CIAVCXEN EXCLUDED STOPS... OK

Updating parameter CIAVCXEN PROVIDER... Nothing to change.

Updating parameter CIAVCXEN SEARCH RANGE START... OK

Updating parameter CIAVCXEN SEARCH RANGE STOP... OK

Updating parameter CIAVCXEN VISIT TYPES... OK

Updating parameter CIAVIH ENCOUNTER SUMMARY END... OK

Updating parameter CIAVIH ENCOUNTER SUMMARY START... OK

Updating parameter CIAVM COUNTDOWN INTERVAL... OK

Updating parameter CIAVM DEFAULT SOURCE... OK

Updating parameter CIAVM DEFAULT TARGET... OK

Updating parameter CIAVM DEFAULT TEMPLATE... OK

Updating parameter CIAVM DISABLE CCOW... OK

Updating parameter CIAVM OBJECT FAVORITES... Nothing to change.

Updating parameter CIAVM PRIMARY TIMEOUT... OK

Updating parameter CIAVM SECONDARY TIMEOUT... OK

Updating parameter CIAVUTIO DEFAULT FOOTER... OK

Updating parameter CIAVUTIO DEFAULT HEADER... OK

Updating parameter CIAVUTIO DEFAULT PRINTER... Nothing to change.

Updating parameter CIAVUTIO LOCAL PRINTER... OK
Updating parameter CIAZG UPDATE INTERVAL... Nothing to change.
Updating parameter BEHOPTCX DEMO MODE... OK
Updating parameter BEHOPTCX DETAIL REPORT... OK
Updating parameter BEHOPTCX LAST PATIENT... Nothing to change.
Updating parameter BEHOPTCX PHOTO MASK... OK
Updating parameter BEHOPTCX RECALL LAST... OK
Updating parameter BEHOPTPL DATE RANGES... OK
Updating parameter BEHOPTPL DEFAULT ITEM... OK
Updating parameter BEHOPTPL DEFAULT SOURCE... OK
Updating parameter BEHOPTPL PERSONAL LIST... Nothing to change.
Updating parameter BEHOSP ENABLE SPELLCHECKER... Nothing to change.
Updating parameter BEHOSP SERVICE PLUGIN... Nothing to change.
Updating parameter BEHOVM DATA ENTRY... OK
Updating parameter BEHOVM TEMPLATE... OK
Updating parameter BEHOVM USE VMSR... OK
Updating parameter BEHOVM VITAL LIST... OK
Updating parameter BEHOXQ ALERT THRESHOLD... OK
Updating parameter BEHOXQ SHOW ALL... OK
Updating parameter BEHOXQ SORT BY... OK
Updating parameter BEHOXQPC REQUIRES E&M CODE... Nothing to change.

CIA UTILITIES 1.2

Install Started for CIA UTILITIES 1.2 :
Feb 27, 2007@16:12:40

Build Distribution Date: Feb 09, 2007

Installing Routines:
Feb 27, 2007@16:12:41

Installing PACKAGE COMPONENTS:

Installing REMOTE PROCEDURE
Feb 27, 2007@16:12:41

Running Post-Install Routine: POST^CIAUINIT

Initialization completed for CACHE/OpenM operating system.

Updating Routine file...

Updating KIDS files...

CIA UTILITIES 1.2 Installed.
Feb 27, 2007@16:12:42

NO Install Message sent
CIA NETWORK COMPONENTS 1.1

Install Started for CIA NETWORK COMPONENTS 1.1 :

```
Feb 27, 2007@16:12:42
Build Distribution Date: Feb 09, 2007
Installing Routines:
    Feb 27, 2007@16:12:42
Updating Routine file...
Updating KIDS files...
CIA NETWORK COMPONENTS 1.1 Installed.
    Feb 27, 2007@16:12:42
NO Install Message sent
CIAN*1.1*001003
Install Started for CIAN*1.1*001003 :
    Feb 27, 2007@16:12:42
Build Distribution Date: Feb 09, 2007
Installing Routines:
    Feb 27, 2007@16:12:42
Running Pre-Install Routine: PRE^CIANBINI
    Installing routine binaries...
Installing Data Dictionaries:
    Feb 27, 2007@16:12:42
Installing Data:
    Feb 27, 2007@16:12:42
Installing PACKAGE COMPONENTS:
Installing DIALOG
Installing REMOTE PROCEDURE
Installing OPTION
Installing PARAMETER DEFINITION
    Feb 27, 2007@16:12:46
Running Post-Install Routine: POST^CIANBINI
    Setting up default site parameters...
VUECENTRIC: Waiting for listener to start....Listener started on port 9202
Updating Routine file...
Updating KIDS files...
CIAN*1.1*001003 Installed.
    Feb 27, 2007@16:12:48
NO Install Message sent
VUECENTRIC FRAMEWORK 1.1V2
Install Started for VUECENTRIC FRAMEWORK 1.1V2 :
    Feb 27, 2007@16:12:48
Build Distribution Date: Feb 09, 2007
Installing Routines:
    Feb 27, 2007@16:12:48
Running Pre-Install Routine: PRE^CIAVINIT
No sessions are active.
```

```
Proceeding with installation...

Cleaning up VUECENTRIC OBJECT REGISTRY....

Cleaning up VUECENTRIC OBJECT CATEGORY...

Cleaning up VUECENTRIC TEMPLATE REGISTRY...

Object VCMONITOR.VCMONITORX renamed to VCMONITOR.MONITOR.

Saving local object registry settings...

Creating new object categories...

Installing Data Dictionaries:
    Feb 27, 2007@16:12:49

Installing Data:
    Feb 27, 2007@16:12:49

Installing PACKAGE COMPONENTS:

Installing SECURITY KEY

Installing MAIL GROUP

Installing PROTOCOL

Installing REMOTE PROCEDURE

Installing OPTION
    Feb 27, 2007@16:12:50

Running Post-Install Routine: POST^CIAVINIT

    Setting up default site parameters...

    Restoring local object registry settings...

Registering OR CPRS GUI CHART as a subcontext under CIAV VUECENTRIC...
Removing redundant RPC references...
DG SENSITIVE RECORD ACCESS - Removed
DG CHK PAT/DIV MEANS TEST - Removed
DG SENSITIVE RECORD BULLETIN - Removed
DG CHK BS5 XREF Y/N - Removed
DG CHK BS5 XREF ARRAY - Removed

5 remote procedure(s) removed

    Registering VueCentric with Visit Tracking...


Updating Routine file...

Updating KIDS files...

VUECENTRIC FRAMEWORK 1.1V2 Installed.
    Feb 27, 2007@16:12:51

NO Install Message sent

VUECENTRIC COMPONENTS 1.1

    Install Started for VUECENTRIC COMPONENTS 1.1 :
        Feb 27, 2007@16:12:51

Build Distribution Date: Feb 09, 2007

Installing Routines:
```

```
Updating Routine file...

Updating KIDS files...

VUECENTRIC COMPONENTS 1.1 Installed.
    Feb 27, 2007@16:12:51

NO Install Message sent

BEH UTILITIES 1.2

    Install Started for BEH UTILITIES 1.2 :
        Feb 27, 2007@16:12:51

Build Distribution Date: Feb 09, 2007

    Installing Routines:
        Feb 27, 2007@16:12:51

    Installing PACKAGE COMPONENTS:

    Installing SECURITY KEY
        Feb 27, 2007@16:12:51

Updating Routine file...

Updating KIDS files...

BEH UTILITIES 1.2 Installed.
    Feb 27, 2007@16:12:51

NO Install Message sent

BEH COMPONENTS 1.1

    Install Started for BEH COMPONENTS 1.1 :
        Feb 27, 2007@16:12:51

Build Distribution Date: Feb 09, 2007

    Installing Routines:
        Feb 27, 2007@16:12:51

    Installing PACKAGE COMPONENTS:

    Installing SECURITY KEY

    Installing OPTION
        Feb 27, 2007@16:12:51

Updating Routine file...

Updating KIDS files...

BEH COMPONENTS 1.1 Installed.
    Feb 27, 2007@16:12:51

NO Install Message sent

OR*3.0*1002

    Install Started for OR*3.0*1002 :
        Feb 27, 2007@16:12:51

Build Distribution Date: Feb 09, 2007

    Installing Routines:
        Feb 27, 2007@16:12:52

Running Pre-Install Routine: PRE^ORIN1002

    Installing Data Dictionaries:
        Feb 27, 2007@16:12:52

    Installing Data: .
```

```
Feb 27, 2007@16:12:52

Installing PACKAGE COMPONENTS:

Installing REMOTE PROCEDURE

Installing PARAMETER DEFINITION

Installing PARAMETER TEMPLATE
Feb 27, 2007@16:12:52

Running Post-Install Routine: POST^ORIN1002

Added clinical indicator prompt to LR OTHER LAB TESTS.

Added clinical indicator ICD9 prompt to LR OTHER LAB TESTS.

Added chronic med prompt to PSO SUPPLY.

Added chronic med prompt to PSO ASPIRIN EC 325.

Added chronic med prompt to PSOZ LISINOPRIL 10MG QD.

Added chronic med prompt to PSOZ LISINOPRIL 20MG QD.

Added chronic med prompt to PSOZ LISINOPRIL 40MG QD.

Added chronic med prompt to PSOZ DENTAL MOTRIN.

Added chronic med prompt to PSOZ DENTAL PENICILLIN.

Added chronic med prompt to PSOZ DENTAL TYLENOL.

Added chronic med prompt to PSOZ DENTAL CLINDAMYCIN.

Added chronic med prompt to PSOZ DENTAL TYLENOL #3.

Added chronic med prompt to PSOZ DENTAL METRONIDAZOLE QID.

Added chronic med prompt to PSOZ DENTAL NAPROXEN.

Added chronic med prompt to PSOZ DENTAL CEPHALEXIN.

Added chronic med prompt to PSOZ DENTAL CHLORHEXIDINE.

Added chronic med prompt to PSOZ DENTAL AMOXICILLIN.

Added chronic med prompt to PSOZ DENTAL DIAZEPAM BEFORE VISIT.

Added chronic med prompt to PREDNISOLONE OPTH SUSP.

Updating Routine file...

Updating KIDS files...

OR*3.0*1002 Installed.
Feb 27, 2007@16:12:52

NO Install Message sent

CIAO*1.1*002001

Install Started for CIAO*1.1*002001 :
Feb 27, 2007@16:12:52

Build Distribution Date: Feb 09, 2007

Installing Routines:
Feb 27, 2007@16:12:53

Running Pre-Install Routine: PRE^CIAOINIT

Saving local object registry settings...

Creating new object categories...
```

```
Installing Data Dictionaries:
    Feb 27, 2007@16:12:53

Installing Data:
    Feb 27, 2007@16:12:53

Running Post-Install Routine: POST^CIAOINIT

    Restoring local object registry settings...

    Setting up default site parameters...

Updating Routine file...

Updating KIDS files...

CIAO*1.1*002001 Installed.
    Feb 27, 2007@16:12:53

NO Install Message sent

CIAO*1.1*004001

    Install Started for CIAO*1.1*004001 :
        Feb 27, 2007@16:12:53

Build Distribution Date: Feb 09, 2007

Installing Routines:
    Feb 27, 2007@16:12:53

Running Pre-Install Routine: PRE^CIAOINIT

    Object VCIMAGE.VCIMAGEX renamed to VCIMAGE.IMAGEX.

    Saving local object registry settings...

    Creating new object categories...

Installing Data Dictionaries:
    Feb 27, 2007@16:12:53

Installing Data:
    Feb 27, 2007@16:12:53

Running Post-Install Routine: POST^CIAOINIT

    Restoring local object registry settings...

    Setting up default site parameters...

Updating Routine file...

Updating KIDS files...

CIAO*1.1*004001 Installed.
    Feb 27, 2007@16:12:53

NO Install Message sent

CIAO*1.1*003001

    Install Started for CIAO*1.1*003001 :
        Feb 27, 2007@16:12:53

Build Distribution Date: Feb 09, 2007

Installing Routines:
    Feb 27, 2007@16:12:53

Running Pre-Install Routine: PRE^CIAOINIT

    Object VCIEXPLORER.VCIEXPLORERX renamed to VCIEXPLORER.IEXPLORER.
```



```
Saving local object registry settings...

Creating new object categories...

Installing Data Dictionaries:
    Feb 27, 2007@16:12:53

Installing Data:
    Feb 27, 2007@16:12:53

Running Post-Install Routine: POST^CIAOINIT

Restoring local object registry settings...

Setting up default site parameters...

Updating Routine file...

Updating KIDS files...

CIAO*1.1*003001 Installed.
    Feb 27, 2007@16:12:53

NO Install Message sent

CIAO*1.1*008001

Install Started for CIAO*1.1*008001 :
    Feb 27, 2007@16:12:53

Build Distribution Date: Feb 09, 2007

Installing Routines:
    Feb 27, 2007@16:12:53

Running Pre-Install Routine: PRE^CIAOINIT

Object VCBROADCAST.VCBROADCASTX renamed to VCBROADCAST.BROADCAST.

Saving local object registry settings...

Creating new object categories...

Installing Data Dictionaries:
    Feb 27, 2007@16:12:53

Installing Data:
    Feb 27, 2007@16:12:53

Running Post-Install Routine: POST^CIAOINIT

Restoring local object registry settings...

Setting up default site parameters...

Updating Routine file...

Updating KIDS files...

CIAO*1.1*008001 Installed.
    Feb 27, 2007@16:12:53

NO Install Message sent

CIAO*1.1*009001

Install Started for CIAO*1.1*009001 :
    Feb 27, 2007@16:12:53

Build Distribution Date: Feb 09, 2007

Installing Routines:
    Feb 27, 2007@16:12:53
```

```
Running Pre-Install Routine: PRE^CIAOINIT

Object VCPATPHOTO.VCPATPHOTOX renamed to VCPATPHOTO.PATPHOTO.

Saving local object registry settings...

Creating new object categories...

Installing Data Dictionaries:
    Feb 27, 2007@16:12:53

Installing Data:
    Feb 27, 2007@16:12:53

Running Post-Install Routine: POST^CIAOINIT

Restoring local object registry settings...

Setting up default site parameters...

Updating Routine file...

Updating KIDS files...

CIAO*1.1*009001 Installed.
    Feb 27, 2007@16:12:53

NO Install Message sent

CIAO*1.1*005001

Install Started for CIAO*1.1*005001 :
    Feb 27, 2007@16:12:53

Build Distribution Date: Feb 09, 2007

Installing Routines:
    Feb 27, 2007@16:12:53

Running Pre-Install Routine: PRE^CIAOINIT

Object VCLAUNCHER.VCLAUNCHERX renamed to VCLAUNCHER.LAUNCHER.

Saving local object registry settings...

Creating new object categories...

Installing Data Dictionaries:
    Feb 27, 2007@16:12:53

Installing Data:
    Feb 27, 2007@16:12:53

Running Post-Install Routine: POST^CIAOINIT

Restoring local object registry settings...

Setting up default site parameters...

Updating Routine file...

Updating KIDS files...

CIAO*1.1*005001 Installed.
    Feb 27, 2007@16:12:53

NO Install Message sent

CIAO*1.1*006001

Install Started for CIAO*1.1*006001 :
    Feb 27, 2007@16:12:53

Build Distribution Date: Feb 09, 2007
```

```
Installing Routines:
    Feb 27, 2007@16:12:53

Running Pre-Install Routine: PRE^CIAOINIT

    Object VCTELNET.VCTELNETX renamed to VCTELNET.TELNETX.

    Saving local object registry settings...

    Creating new object categories...

Installing Data Dictionaries:
    Feb 27, 2007@16:12:53

Installing Data:
    Feb 27, 2007@16:12:53

Running Post-Install Routine: POST^CIAOINIT

    Restoring local object registry settings...

    Setting up default site parameters...

Updating Routine file...

Updating KIDS files...

CIAO*1.1*006001 Installed.
    Feb 27, 2007@16:12:54

NO Install Message sent

BEHO*1.1*007001

    Install Started for BEHO*1.1*007001 :
        Feb 27, 2007@16:12:54

Build Distribution Date: Feb 09, 2007

Installing Routines:
    Feb 27, 2007@16:12:54

Running Pre-Install Routine: PRE^CIAOINIT
    Saving local object registry settings...

    Creating new object categories...

Installing Data Dictionaries:
    Feb 27, 2007@16:12:54

Installing Data:
    Feb 27, 2007@16:12:54

Installing PACKAGE COMPONENTS:

Installing REMOTE PROCEDURE
    Feb 27, 2007@16:12:54

Running Post-Install Routine: POST^CIAOINIT

    Restoring local object registry settings...

    Setting up default site parameters...

Updating Routine file...

Updating KIDS files...

BEHO*1.1*007001 Installed.
    Feb 27, 2007@16:12:54

NO Install Message sent

BEHO*1.1*026001
```

```
Install Started for BEHO*1.1*026001 :
    Feb 27, 2007@16:12:54

Build Distribution Date: Feb 09, 2007

Installing Routines:
    Feb 27, 2007@16:12:54

Running Pre-Install Routine: PRE^CIAOINIT

    Object VCALETS.VCALETSX renamed to BEHALERTS.ALERTS.

    Saving local object registry settings...

    Creating new object categories...

Installing Data Dictionaries:
    Feb 27, 2007@16:12:54

Installing Data:
    Feb 27, 2007@16:12:54

Installing PACKAGE COMPONENTS:

Installing REMOTE PROCEDURE
    Feb 27, 2007@16:12:54

Running Post-Install Routine: POST^CIAOINIT

    Restoring local object registry settings...

    Setting up default site parameters...

Updating Routine file...

Updating KIDS files...

BEHO*1.1*026001 Installed.
    Feb 27, 2007@16:12:54

NO Install Message sent

BEHO*1.1*027001

Install Started for BEHO*1.1*027001 :
    Feb 27, 2007@16:12:54

Build Distribution Date: Feb 09, 2007

Installing Routines:
    Feb 27, 2007@16:12:54

Running Pre-Install Routine: PRE^CIAOINIT

    Object VCALLERGIES.VCALLERGIESX renamed to BEHALLERGIES.ALLERGIES.

    Saving local object registry settings...

    Creating new object categories...

Installing Data Dictionaries:
    Feb 27, 2007@16:12:54

Installing Data:
    Feb 27, 2007@16:12:54

Installing PACKAGE COMPONENTS:

Installing REMOTE PROCEDURE
    Feb 27, 2007@16:12:54

Running Post-Install Routine: POST^CIAOINIT

    Restoring local object registry settings...
```

```
Setting up default site parameters...
Updating Routine file...
Updating KIDS files...
BEHO*1.1*027001 Installed.
      Feb 27, 2007@16:12:54

NO Install Message sent

BEHO*1.1*028001

Install Started for BEHO*1.1*028001 :
      Feb 27, 2007@16:12:54

Build Distribution Date: Feb 09, 2007

Installing Routines:
      Feb 27, 2007@16:12:54

Running Pre-Install Routine: PRE^CIAOINIT

Saving local object registry settings...

Creating new object categories...

Installing Data Dictionaries:
      Feb 27, 2007@16:12:55

Installing Data:
      Feb 27, 2007@16:12:55

Installing PACKAGE COMPONENTS:

Installing REMOTE PROCEDURE
      Feb 27, 2007@16:12:55

Running Post-Install Routine: POST^CIAOINIT

Restoring local object registry settings...

Setting up default site parameters...
Updating Routine file...
Updating KIDS files...
BEHO*1.1*028001 Installed.
      Feb 27, 2007@16:12:55

NO Install Message sent

BEHO*1.1*017001

Install Started for BEHO*1.1*017001 :
      Feb 27, 2007@16:12:55

Build Distribution Date: Feb 09, 2007

Installing Routines:
      Feb 27, 2007@16:12:55

Running Pre-Install Routine: PRE^CIAOINIT

Object CWCONSULTS.CWCONSULTSX renamed to BEHCONSULTS.CONSULTS.

Saving local object registry settings...

Creating new object categories...

Installing Data Dictionaries:
      Feb 27, 2007@16:12:55
```

```
Installing Data:
    Feb 27, 2007@16:12:55

Installing PACKAGE COMPONENTS:

Installing OPTION
    Feb 27, 2007@16:12:55

Running Post-Install Routine: POST^CIAOINIT

    Failed to resolve BEHESIGSERVICE.ESIGSERVICE

Restoring local object registry settings...

Setting up default site parameters...

Updating Routine file...

Updating KIDS files...

BEHO*1.1*017001 Installed.
    Feb 27, 2007@16:12:56

NO Install Message sent

BEHO*1.1*035001

Install Started for BEHO*1.1*035001 :
    Feb 27, 2007@16:12:56

Build Distribution Date: Feb 09, 2007

Installing Routines:
    Feb 27, 2007@16:12:56

Running Pre-Install Routine: PRE^CIAOINIT

    Object VCTRANSLATECONTEXT.VCTRANSLATECONTEXTX renamed to BEHCONTEXTADAPTER.CONTEXTADAPTER.

Saving local object registry settings...

Creating new object categories...

Installing Data Dictionaries:
    Feb 27, 2007@16:12:56

Installing Data:
    Feb 27, 2007@16:12:56

Running Post-Install Routine: POST^CIAOINIT

Restoring local object registry settings...

Setting up default site parameters...

Updating Routine file...

Updating KIDS files...

BEHO*1.1*035001 Installed.
    Feb 27, 2007@16:12:56

NO Install Message sent

BEHO*1.1*022001

Install Started for BEHO*1.1*022001 :
    Feb 27, 2007@16:12:56

Build Distribution Date: Feb 09, 2007

Installing Routines:
    Feb 27, 2007@16:12:56

Running Pre-Install Routine: PRE^CIAOINIT
```

```
Object CWCPRS.CWCPRSSERVICES renamed to BEHOPTIONS.OPTIONS.
Saving local object registry settings...
Creating new object categories...
Installing Data Dictionaries:
    Feb 27, 2007@16:12:56
Installing Data:
    Feb 27, 2007@16:12:56
Running Post-Install Routine: POST^CIAOINIT
Restoring local object registry settings...
Setting up default site parameters...
Object BEHOPTIONS.OPTIONS.DIALOGOPTIONS renamed to BEHOPTIONS.OPTIONS.EXECUTE.
Updating Routine file...
Updating KIDS files...
BEHO*1.1*022001 Installed.
    Feb 27, 2007@16:12:56
NO Install Message sent
BEHO*1.1*029001
Install Started for BEHO*1.1*029001 :
    Feb 27, 2007@16:12:56
Build Distribution Date: Feb 09, 2007
Installing Routines:
    Feb 27, 2007@16:12:56
Running Pre-Install Routine: PRE^CIAOINIT
Object VCCRISES.VCCRISESX renamed to BEHCRISES.CRISES.
Saving local object registry settings...
Creating new object categories...
Installing Data Dictionaries:
    Feb 27, 2007@16:12:56
Installing Data:
    Feb 27, 2007@16:12:56
Installing PACKAGE COMPONENTS:
Installing REMOTE PROCEDURE
    Feb 27, 2007@16:12:56
Running Post-Install Routine: POST^CIAOINIT
Restoring local object registry settings...
Setting up default site parameters...
Updating Routine file...
Updating KIDS files...
BEHO*1.1*029001 Installed.
    Feb 27, 2007@16:12:56
NO Install Message sent
BEHO*1.1*030001
```

```
Install Started for BEHO*1.1*030001 :
    Feb 27, 2007@16:12:56

Build Distribution Date: Feb 09, 2007

Installing Routines:
    Feb 27, 2007@16:12:56

Running Pre-Install Routine: PRE^CIAOINIT

    Object VCCWAD.VCCWADX renamed to BEHCWAD.CWAD.

    Saving local object registry settings...

    Creating new object categories...

Installing Data Dictionaries:
    Feb 27, 2007@16:12:56

Installing Data:
    Feb 27, 2007@16:12:56

Running Post-Install Routine: POST^CIAOINIT

    Restoring local object registry settings...

    Setting up default site parameters...

Updating Routine file...

Updating KIDS files...

BEHO*1.1*030001 Installed.
    Feb 27, 2007@16:12:56

NO Install Message sent

BEHO*1.1*040001

Install Started for BEHO*1.1*040001 :
    Feb 27, 2007@16:12:56

Build Distribution Date: Feb 09, 2007

Installing Routines:
    Feb 27, 2007@16:12:56

Running Pre-Install Routine: PRE^CIAOINIT

    Object VCDICTATE.VCDICTATEX renamed to BEHDICTATE.DICTATE.

    Saving local object registry settings...

    Creating new object categories...

Installing Data Dictionaries:
    Feb 27, 2007@16:12:56

Installing Data: ..
    Feb 27, 2007@16:13:07

Installing PACKAGE COMPONENTS:

Installing MAIL GROUP

Installing HL LOGICAL LINK

Installing HL7 APPLICATION PARAMETER

Installing PROTOCOL

Installing REMOTE PROCEDURE
    Feb 27, 2007@16:13:09
```



```
Running Post-Install Routine: POST^CIAOINIT

Restoring local object registry settings...

Setting up default site parameters...

Updating Routine file...

Updating KIDS files...

BEHO*1.1*040001 Installed.
Feb 27, 2007@16:13:09

NO Install Message sent

BEHO*1.1*018001

Install Started for BEHO*1.1*018001 :
Feb 27, 2007@16:13:09

Build Distribution Date: Feb 09, 2007

Installing Routines:
Feb 27, 2007@16:13:09

Running Pre-Install Routine: PRE^CIAOINIT

Object CWDCSUMM.CWDCSUMMX renamed to BEHDCSUMM.DCSUMM.

Saving local object registry settings...

Creating new object categories...

Installing Data Dictionaries:
Feb 27, 2007@16:13:09

Installing Data:
Feb 27, 2007@16:13:09

Running Post-Install Routine: POST^CIAOINIT

Failed to resolve BEHESIGSERVICE.ESIGSERVICE

Restoring local object registry settings...

Setting up default site parameters...

Updating Routine file...

Updating KIDS files...

BEHO*1.1*018001 Installed.
Feb 27, 2007@16:13:09

NO Install Message sent

BEHO*1.1*005001

Install Started for BEHO*1.1*005001 :
Feb 27, 2007@16:13:09

Build Distribution Date: Feb 09, 2007

Installing Routines:
Feb 27, 2007@16:13:09

Running Pre-Install Routine: PRE^CIAOINIT

Saving local object registry settings...

Creating new object categories...

Installing Data Dictionaries:
Feb 27, 2007@16:13:09
```

```
Installing Data: .
    Feb 27, 2007@16:13:10

Installing PACKAGE COMPONENTS:

Installing REMOTE PROCEDURE

Installing OPTION

Installing PARAMETER DEFINITION
    Feb 27, 2007@16:13:10

Running Post-Install Routine: POST^CIAOINIT

    Restoring local object registry settings...

    Setting up default site parameters...

Updating Routine file...

Updating KIDS files...

BEHO*1.1*005001 Installed.
    Feb 27, 2007@16:13:10

NO Install Message sent

BEHO*1.1*031002

    Install Started for BEHO*1.1*031002 :
        Feb 27, 2007@16:13:10

Build Distribution Date: Feb 09, 2007

    Installing Routines:
        Feb 27, 2007@16:13:10

Running Pre-Install Routine: PRE^CIAOINIT

    Object VCENCOUNTERINFO.VCENCOUNTERINFOX renamed to BEHENCOUNTERINFO.ENCOUNTERINFO.

    Saving local object registry settings...

    Creating new object categories...

Installing Data Dictionaries:
    Feb 27, 2007@16:13:10

Installing Data:
    Feb 27, 2007@16:13:10

Installing PACKAGE COMPONENTS:

Installing REMOTE PROCEDURE
    Feb 27, 2007@16:13:10

Running Post-Install Routine: POST^CIAOINIT

    Restoring local object registry settings...

    Setting up default site parameters...

Updating Routine file...

Updating KIDS files...

BEHO*1.1*031002 Installed.
    Feb 27, 2007@16:13:10

NO Install Message sent

BEHO*1.1*016001

    Install Started for BEHO*1.1*016001 :
        Feb 27, 2007@16:13:10
```

```
Build Distribution Date: Feb 09, 2007

Installing Routines:
    Feb 27, 2007@16:13:11

Running Pre-Install Routine: PRE^CIAOINIT

    Object CWIESIGNSERVER.CWIESIGNATURE renamed to BEHESIGSERVICE.ESIGSERVICE.
    Object CWSIGNREVIEW.CWSIGNREVIEWX renamed to BEHESIGREVIEW.REVIEW.

    Saving local object registry settings...

    Creating new object categories...

Installing Data Dictionaries:
    Feb 27, 2007@16:13:11

Installing Data:
    Feb 27, 2007@16:13:11

Running Post-Install Routine: POST^CIAOINIT

    Restoring local object registry settings...

    Setting up default site parameters...

Updating Routine file...

Updating KIDS files...

BEHO*1.1*016001 Installed.
    Feb 27, 2007@16:13:11

NO Install Message sent

BEHO*1.1*032001

    Install Started for BEHO*1.1*032001 :
        Feb 27, 2007@16:13:11

Build Distribution Date: Feb 09, 2007

Installing Routines:
    Feb 27, 2007@16:13:11

Running Pre-Install Routine: PRE^CIAOINIT

    Object VCLABORDERS.VCLABORDERSX renamed to BEHLABORDERS.LABORDERS.

    Saving local object registry settings...

    Creating new object categories...

Installing Data Dictionaries:
    Feb 27, 2007@16:13:11

Installing Data:
    Feb 27, 2007@16:13:11

Installing PACKAGE COMPONENTS:

Installing REMOTE PROCEDURE

Installing OPTION
    Feb 27, 2007@16:13:11

Running Post-Install Routine: POST^CIAOINIT

    Restoring local object registry settings...

    Setting up default site parameters...

Updating Routine file...
```

```
Updating KIDS files...
BEHO*1.1*032001 Installed.
    Feb 27, 2007@16:13:11

NO Install Message sent

BEHO*1.1*019001

Install Started for BEHO*1.1*019001 :
    Feb 27, 2007@16:13:11

Build Distribution Date: Feb 09, 2007

Installing Routines:
    Feb 27, 2007@16:13:11

Running Pre-Install Routine: PRE^CIAOINIT

Object CWLAB.CWLABSX renamed to BEHLAB.LABVIEW.

Saving local object registry settings...

Creating new object categories...

Installing Data Dictionaries:
    Feb 27, 2007@16:13:11

Installing Data:
    Feb 27, 2007@16:13:11

Running Post-Install Routine: POST^CIAOINIT

    Failed to resolve BEHREMOTEVIEWS.REMOTESITES

Restoring local object registry settings...

Setting up default site parameters...

Updating Routine file...

Updating KIDS files...

BEHO*1.1*019001 Installed.
    Feb 27, 2007@16:13:11

NO Install Message sent

BEHO*1.1*009002

Install Started for BEHO*1.1*009002 :
    Feb 27, 2007@16:13:11

Build Distribution Date: Feb 09, 2007

Installing Routines:
    Feb 27, 2007@16:13:11

Running Pre-Install Routine: PRE^CIAOINIT

Saving local object registry settings...

Creating new object categories...

Installing Data Dictionaries:
    Feb 27, 2007@16:13:11

Installing Data:
    Feb 27, 2007@16:13:11

Installing PACKAGE COMPONENTS:

Installing REMOTE PROCEDURE
```

```
Installing OPTION
    Feb 27, 2007@16:13:11

Running Post-Install Routine: POST^CIAOINIT

    Restoring local object registry settings...

    Setting up default site parameters...

Updating Routine file...

Updating KIDS files...

BEHO*1.1*009002 Installed.
    Feb 27, 2007@16:13:11

NO Install Message sent

BEHO*1.1*033001

    Install Started for BEHO*1.1*033001 :
        Feb 27, 2007@16:13:11

Build Distribution Date: Feb 09, 2007

Installing Routines:
    Feb 27, 2007@16:13:11

Running Pre-Install Routine: PRE^CIAOINIT

    Object VCMEDICATIONLIST.VCMEDICATIONLISTX renamed to BEHMEDLIST.MEDLIST.

    Saving local object registry settings...

    Creating new object categories...

Installing Data Dictionaries:
    Feb 27, 2007@16:13:11

Installing Data:
    Feb 27, 2007@16:13:11

Installing PACKAGE COMPONENTS:

Installing REMOTE PROCEDURE
    Feb 27, 2007@16:13:11

Running Post-Install Routine: POST^CIAOINIT

    Restoring local object registry settings...

    Setting up default site parameters...

Updating Routine file...

Updating KIDS files...

BEHO*1.1*033001 Installed.
    Feb 27, 2007@16:13:12

NO Install Message sent

BEHO*1.1*002002

    Install Started for BEHO*1.1*002002 :
        Feb 27, 2007@16:13:12

Build Distribution Date: Feb 09, 2007

Installing Routines:
    Feb 27, 2007@16:13:12

Running Pre-Install Routine: PRE^CIAOINIT

    Saving local object registry settings...
```

```
Creating new object categories...
Installing Data Dictionaries:
    Feb 27, 2007@16:13:12
Installing Data:
    Feb 27, 2007@16:13:12
Installing PACKAGE COMPONENTS:
Installing REMOTE PROCEDURE
Installing OPTION
Running Post-Install Routine: POST^CIAOINIT
    Restoring local object registry settings...
    Setting up default site parameters...
Updating Routine file...
Updating KIDS files...
BEHO*1.1*002002 Installed.
    Feb 27, 2007@16:13:13
NO Install Message sent
BEHO*1.1*011001
    Install Started for BEHO*1.1*011001 :
        Feb 27, 2007@16:13:13
Build Distribution Date: Feb 09, 2007
Installing Routines:
    Feb 27, 2007@16:13:13
Running Pre-Install Routine: PRE^CIAOINIT
    Object CWORDERS.CWORDERSX renamed to BEHORDERS.ORDERENTRY.
    Saving local object registry settings...
    Creating new object categories...
Installing Data Dictionaries:
    Feb 27, 2007@16:13:13
Installing Data:
    Feb 27, 2007@16:13:13
Installing PACKAGE COMPONENTS:
Installing OPTION
    Feb 27, 2007@16:13:14
Running Post-Install Routine: POST^CIAOINIT
    Restoring local object registry settings...
    Setting up default site parameters...
Updating Routine file...
Updating KIDS files...
BEHO*1.1*011001 Installed.
    Feb 27, 2007@16:13:15
NO Install Message sent
BEHO*1.1*004002
```

```
Install Started for BEHO*1.1*004002 :
    Feb 27, 2007@16:13:15

Build Distribution Date: Feb 09, 2007

Installing Routines:
    Feb 27, 2007@16:13:15

Running Pre-Install Routine: PRE^CIAOINIT

    Saving local object registry settings...

    Creating new object categories...

Installing Data Dictionaries:
    Feb 27, 2007@16:13:15

Installing Data:
    Feb 27, 2007@16:13:15

Installing PACKAGE COMPONENTS:

Installing REMOTE PROCEDURE

Installing OPTION
    Feb 27, 2007@16:13:15

Running Post-Install Routine: POST^CIAOINIT

    Restoring local object registry settings...

    Setting up default site parameters...

Updating Routine file...

Updating KIDS files...

BEHO*1.1*004002 Installed.
    Feb 27, 2007@16:13:15

NO Install Message sent

BEHO*1.1*010001

Install Started for BEHO*1.1*010001 :
    Feb 27, 2007@16:13:15

Build Distribution Date: Feb 09, 2007

Installing Routines:
    Feb 27, 2007@16:13:15

Running Pre-Install Routine: PRE^CIAOINIT

    Object VCPTDETAIL.VCPTDETAILX renamed to BEHPTDETAIL.PTDETAIL.

    Saving local object registry settings...

    Creating new object categories...

Installing Data Dictionaries:
    Feb 27, 2007@16:13:16

Installing Data:
    Feb 27, 2007@16:13:16

Running Post-Install Routine: POST^CIAOINIT

    Restoring local object registry settings...

    Setting up default site parameters...

Updating Routine file...
```

```
Updating KIDS files...

BEHO*1.1*010001 Installed.
      Feb 27, 2007@16:13:16

NO Install Message sent

BEHO*1.1*025001

  Install Started for BEHO*1.1*025001 :
      Feb 27, 2007@16:13:16

Build Distribution Date: Feb 09, 2007

  Installing Routines:
      Feb 27, 2007@16:13:16

Running Pre-Install Routine: PRE^CIAOINIT

  Object VCPATIENTID.VCPATIENTIDX renamed to BEHPATIENTID.PATIENTID.

  Saving local object registry settings...

  Creating new object categories...

Installing Data Dictionaries:
      Feb 27, 2007@16:13:16

Installing Data:
      Feb 27, 2007@16:13:16

Running Post-Install Routine: POST^CIAOINIT

  Restoring local object registry settings...

  Setting up default site parameters...

Updating Routine file...

Updating KIDS files...

BEHO*1.1*025001 Installed.
      Feb 27, 2007@16:13:16

NO Install Message sent

BEHO*1.1*003001

  Install Started for BEHO*1.1*003001 :
      Feb 27, 2007@16:13:16

Build Distribution Date: Feb 09, 2007

  Installing Routines:
      Feb 27, 2007@16:13:16

Running Pre-Install Routine: PRE^CIAOINIT

  Object VCPRIMARYCARE.VCPRIMARYCAREX renamed to BEHPRIMARYCARE.PRIMARYCARE.

  Saving local object registry settings...

  Creating new object categories...

Installing Data Dictionaries:
      Feb 27, 2007@16:13:16

Installing Data:
      Feb 27, 2007@16:13:16

Running Post-Install Routine: POST^CIAOINIT

  Restoring local object registry settings...

  Setting up default site parameters...
```



```
Updating Routine file...
Updating KIDS files...
BEHO*1.1*003001 Installed.
      Feb 27, 2007@16:13:16

NO Install Message sent
BEHO*1.1*036001

Install Started for BEHO*1.1*036001 :
      Feb 27, 2007@16:13:16

Build Distribution Date: Feb 09, 2007

Installing Routines:
      Feb 27, 2007@16:13:16

Running Pre-Install Routine: PRE^CIAOINIT

Object CWPROBLEMS.CWPROBLEMSX renamed to BEHPROBLEMS.PROBLEMS.

Saving local object registry settings...

Creating new object categories...

Installing Data Dictionaries:
      Feb 27, 2007@16:13:16

Installing Data:
      Feb 27, 2007@16:13:16

Running Post-Install Routine: POST^CIAOINIT

Restoring local object registry settings...

Setting up default site parameters...

Updating Routine file...
Updating KIDS files...
BEHO*1.1*036001 Installed.
      Feb 27, 2007@16:13:16

NO Install Message sent
BEHO*1.1*034001

Install Started for BEHO*1.1*034001 :
      Feb 27, 2007@16:13:16

Build Distribution Date: Feb 09, 2007

Installing Routines:
      Feb 27, 2007@16:13:16

Running Pre-Install Routine: PRE^CIAOINIT

Object VCPROBLEMLIST.VCPROBLEMLISTX renamed to BEHPROBLEMLIST.PROBLEMLIST.

Saving local object registry settings...

Creating new object categories...

Installing Data Dictionaries:
      Feb 27, 2007@16:13:16

Installing Data:
      Feb 27, 2007@16:13:16

Installing PACKAGE COMPONENTS:
```

```
Installing REMOTE PROCEDURE
    Feb 27, 2007@16:13:16

Running Post-Install Routine: POST^CIAOINIT

    Restoring local object registry settings...

    Setting up default site parameters...

Updating Routine file...

Updating KIDS files...

BEHO*1.1*034001 Installed.
    Feb 27, 2007@16:13:16

NO Install Message sent

BEHO*1.1*015001

    Install Started for BEHO*1.1*015001 :
        Feb 27, 2007@16:13:16

Build Distribution Date: Feb 09, 2007

    Installing Routines:
        Feb 27, 2007@16:13:16

Running Pre-Install Routine: PRE^CIAOINIT

    Object CWNOTES.CWNOTESX renamed to BEHNOTES.PROGRESSNOTES.

    Saving local object registry settings...

    Creating new object categories...

Installing Data Dictionaries:
    Feb 27, 2007@16:13:16

Installing Data:
    Feb 27, 2007@16:13:16

Installing PACKAGE COMPONENTS:

Installing OPTION
    Feb 27, 2007@16:13:16

Running Post-Install Routine: POST^CIAOINIT

    Restoring local object registry settings...

    Setting up default site parameters...

Updating Routine file...

Updating KIDS files...

BEHO*1.1*015001 Installed.
    Feb 27, 2007@16:13:17

NO Install Message sent

BEHO*1.1*039001

    Install Started for BEHO*1.1*039001 :
        Feb 27, 2007@16:13:17

Build Distribution Date: Feb 09, 2007

    Installing Routines:
        Feb 27, 2007@16:13:17

Running Pre-Install Routine: PRE^CIAOINIT

    Object VCQOWIZARD.VCQOWIZARDX renamed to BEHQOWIZARD.QOWIZARD.
```

```
Saving local object registry settings...
Creating new object categories...
Installing Data Dictionaries:
    Feb 27, 2007@16:13:17
Installing Data:
    Feb 27, 2007@16:13:17
Installing PACKAGE COMPONENTS:
Installing REMOTE PROCEDURE
    Feb 27, 2007@16:13:17
Running Post-Install Routine: POST^CIAOINIT
Restoring local object registry settings...
Setting up default site parameters...
Updating Routine file...
Updating KIDS files...
BEHO*1.1*039001 Installed.
    Feb 27, 2007@16:13:17
NO Install Message sent
BEHO*1.1*024001
Install Started for BEHO*1.1*024001 :
    Feb 27, 2007@16:13:17
Build Distribution Date: Feb 09, 2007
Installing Routines:
    Feb 27, 2007@16:13:17
Running Pre-Install Routine: PRE^CIAOINIT
Object CWVIEWREMINDERS.VIEWREMINDERSX renamed to BEHREMINDERSVIEW.REMINDERSVIEW.
Saving local object registry settings...
Creating new object categories...
Installing Data Dictionaries:
    Feb 27, 2007@16:13:17
Installing Data:
    Feb 27, 2007@16:13:17
Installing PACKAGE COMPONENTS:
Installing OPTION
    Feb 27, 2007@16:13:18
Running Post-Install Routine: POST^CIAOINIT
Restoring local object registry settings...
Setting up default site parameters...
Updating Routine file...
Updating KIDS files...
BEHO*1.1*024001 Installed.
    Feb 27, 2007@16:13:18
NO Install Message sent
```

BEHO*1.1*020001

Install Started for BEHO*1.1*020001 :
Feb 27, 2007@16:13:18

Build Distribution Date: Feb 09, 2007

Installing Routines:
Feb 27, 2007@16:13:18

Running Pre-Install Routine: PRE^CIAOINIT

Object VCREMOTEDATA.VCREMOTEDATAX renamed to BEHREMOTEDATA.REMOTEDATA.

Object VCREMOTEVIEWS.VCREMOTESITES renamed to BEHREMOTEVIEWS.REMOTESITES.

Saving local object registry settings...

Creating new object categories...

Installing Data Dictionaries:
Feb 27, 2007@16:13:18

Installing Data:
Feb 27, 2007@16:13:18

Installing PACKAGE COMPONENTS:

Installing REMOTE PROCEDURE
Feb 27, 2007@16:13:18

Running Post-Install Routine: POST^CIAOINIT

Restoring local object registry settings...

Setting up default site parameters...

Updating Routine file...

Updating KIDS files...

BEHO*1.1*020001 Installed.
Feb 27, 2007@16:13:18

NO Install Message sent

BEHO*1.1*021001

Install Started for BEHO*1.1*021001 :
Feb 27, 2007@16:13:18

Build Distribution Date: Feb 09, 2007

Installing Routines:
Feb 27, 2007@16:13:18

Running Pre-Install Routine: PRE^CIAOINIT

Object CWREPORTS.CWREPORTSX renamed to BEHREPORTS.REPORTS.

Saving local object registry settings...

Creating new object categories...

Installing Data Dictionaries:
Feb 27, 2007@16:13:18

Installing Data:
Feb 27, 2007@16:13:18

Installing PACKAGE COMPONENTS:

Installing OPTION
Feb 27, 2007@16:13:19

```
Running Post-Install Routine: POST^CIAOINIT
  Restoring local object registry settings...
  Setting up default site parameters...
Updating Routine file...
Updating KIDS files...
BEHO*1.1*021001 Installed.
      Feb 27, 2007@16:13:19
NO Install Message sent
BEHO*1.1*023001

Install Started for BEHO*1.1*023001 :
      Feb 27, 2007@16:13:19
Build Distribution Date: Feb 09, 2007
Installing Routines:
      Feb 27, 2007@16:13:19
Running Pre-Install Routine: PRE^CIAOINIT
  Saving local object registry settings...
  Creating new object categories...
Installing Data Dictionaries:
      Feb 27, 2007@16:13:19
Installing Data:
      Feb 27, 2007@16:13:19
Installing PACKAGE COMPONENTS:
Installing OPTION
      Feb 27, 2007@16:13:19
Running Post-Install Routine: POST^CIAOINIT
  Restoring local object registry settings...
  Setting up default site parameters...
Updating Routine file...
Updating KIDS files...
BEHO*1.1*023001 Installed.
      Feb 27, 2007@16:13:19
NO Install Message sent
BEHO*1.1*006001

Install Started for BEHO*1.1*006001 :
      Feb 27, 2007@16:13:19
Build Distribution Date: Feb 09, 2007
Installing Routines:
      Feb 27, 2007@16:13:19
Running Pre-Install Routine: PRE^CIAOINIT
  Saving local object registry settings...
  Creating new object categories...
Installing Data Dictionaries:
```

```
Feb 27, 2007@16:13:20

Installing Data:
Feb 27, 2007@16:13:20

Installing PACKAGE COMPONENTS:

Installing REMOTE PROCEDURE
Feb 27, 2007@16:13:20

Running Post-Install Routine: POST^CIAOINIT

Restoring local object registry settings...

Setting up default site parameters...

Updating Routine file...

Updating KIDS files...

BEHO*1.1*006001 Installed.
Feb 27, 2007@16:13:20

NO Install Message sent

BEHO*1.1*037001

Install Started for BEHO*1.1*037001 :
Feb 27, 2007@16:13:20

Build Distribution Date: Feb 09, 2007

Installing Routines:
Feb 27, 2007@16:13:20

Running Pre-Install Routine: PRE^CIAOINIT

Object VCVISITS.VCVISITSX renamed to BEHVISITS.VISITS.

Saving local object registry settings...

Creating new object categories...

Installing Data Dictionaries:
Feb 27, 2007@16:13:20

Installing Data:
Feb 27, 2007@16:13:20

Installing PACKAGE COMPONENTS:

Installing REMOTE PROCEDURE
Feb 27, 2007@16:13:20

Running Post-Install Routine: POST^CIAOINIT

Restoring local object registry settings...

Setting up default site parameters...

Updating Routine file...

Updating KIDS files...

BEHO*1.1*037001 Installed.
Feb 27, 2007@16:13:20

NO Install Message sent

BEHO*1.1*001002

Install Started for BEHO*1.1*001002 :
Feb 27, 2007@16:13:20

Build Distribution Date: Feb 09, 2007
```

```
Installing Routines:
    Feb 27, 2007@16:13:20

Running Pre-Install Routine: PRE^CIAOINIT

    Saving local object registry settings...

    Creating new object categories...

Installing Data Dictionaries:
    Feb 27, 2007@16:13:20

Installing Data:
    Feb 27, 2007@16:13:20

Installing PACKAGE COMPONENTS:

Installing REMOTE PROCEDURE

Installing OPTION

Installing PARAMETER DEFINITION
    Feb 27, 2007@16:13:20

Running Post-Install Routine: POST^CIAOINIT

    Restoring local object registry settings...

    Setting up default site parameters...

Updating Routine file...

BEHO*1.1*001002 Installed.
    Feb 27, 2007@16:13:20

NO Install Message sent

BEHO*1.1*041001

    Install Started for BEHO*1.1*041001 :
        Feb 27, 2007@16:13:20

Build Distribution Date: Feb 09, 2007

Installing Routines:
    Feb 27, 2007@16:13:20

Running Pre-Install Routine: PRE^CIAOINIT

    Object VCREMINDERS.VCREMINDERSX renamed to BEHREMINDERS.REMINDERS.

    Saving local object registry settings...

    Creating new object categories...

Installing Data Dictionaries:
    Feb 27, 2007@16:13:21

Installing Data:
    Feb 27, 2007@16:13:21

Installing PACKAGE COMPONENTS:

Installing REMOTE PROCEDURE
    Feb 27, 2007@16:13:21

Running Post-Install Routine: POST^CIAOINIT

    Restoring local object registry settings...

    Setting up default site parameters...

Updating Routine file...
```

```
Updating KIDS files...

BEHO*1.1*041001 Installed.
      Feb 27, 2007@16:13:21

NO Install Message sent

BEHO*1.1*042001

  Install Started for BEHO*1.1*042001 :
      Feb 27, 2007@16:13:21

Build Distribution Date: Feb 09, 2007

  Installing Routines:
      Feb 27, 2007@16:13:21

Running Pre-Install Routine: PRE^CIAOINIT

  Saving local object registry settings...

  Creating new object categories...

Installing Data Dictionaries:
      Feb 27, 2007@16:13:21

Installing Data:
      Feb 27, 2007@16:13:21

Running Post-Install Routine: POST^CIAOINIT

  Restoring local object registry settings...

  Setting up default site parameters...

Updating Routine file...

Updating KIDS files...

BEHO*1.1*042001 Installed.
      Feb 27, 2007@16:13:21

NO Install Message sent

BEHO*1.1*044001

  Install Started for BEHO*1.1*044001 :
      Feb 27, 2007@16:13:21

Build Distribution Date: Feb 09, 2007

  Installing Routines:
      Feb 27, 2007@16:13:21

Running Pre-Install Routine: PRE^CIAOINIT

  Saving local object registry settings...

  Creating new object categories...

Installing Data Dictionaries:
      Feb 27, 2007@16:13:21

Installing Data:
      Feb 27, 2007@16:13:21

Installing PACKAGE COMPONENTS:

Installing REMOTE PROCEDURE

Installing OPTION
      Feb 27, 2007@16:13:21

Running Post-Install Routine: POST^CIAOINIT
```



```
Restoring local object registry settings...

Setting up default site parameters...

Setting up default site parameters...

PharmED hospital location may be set for the following:

      80  Division      DIV      [DEMO HOSPITAL]
      90  System        SYS      [DEMO.CIAINFORMATICS.COM]

Enter selection:

Updating Routine file...

Updating KIDS files...

BEHO*1.1*044001 Installed.
      Feb 27, 2007@16:13:22

NO Install Message sent

BGO*1.1*3

Install Started for BGO*1.1*3 :
      Feb 27, 2007@16:13:22

Build Distribution Date: Feb 09, 2007

Installing Routines:
      Feb 27, 2007@16:13:22

Running Pre-Install Routine: PRE^CIAOINIT

Object BGOVCDATE.BGOVCDAT renamed to FILE:IHSBGOVCDATE.OCX.

Object IHSBGOSKINTEST.IHSBAOSK renamed to IHSBGOSKINTEST.IHSBGOSK.

Object MSCOMDLG.COMMONDIALOG.1 renamed to FILE:COMDLG32.OCX.

Object SSSPLITTER.SSSPLITTER.4 renamed to FILE:VB SPLITTER.OCX.

Object TABDLG.SSTAB.1 renamed to FILE:TABCTL32.OCX.

Object VSFLEXGRID8.VSFLEXGRIDL.1 renamed to FILE:VSFLEX8L.OCX.

Saving local object registry settings...

Creating new object categories...

Installing Data Dictionaries:
      Feb 27, 2007@16:13:23

Installing Data:
      Feb 27, 2007@16:13:23

Installing PACKAGE COMPONENTS:

Installing SECURITY KEY

Installing DIALOG

Installing REMOTE PROCEDURE

Installing OPTION

Installing PARAMETER DEFINITION
      Feb 27, 2007@16:13:25

Running Post-Install Routine: POST^CIAOINIT

Restoring local object registry settings...

Setting up default site parameters...
```

Migrating data from BGO PARAMETERS file...

CptHistory-cboType migrated

CptPL-Cols migrated

Searching for missing Refusal Items...

Missing Refusal Items Found: 0

Reindexing Files.....

Updating Routine file...

Updating KIDS files...

BGO*1.1*3 Installed.

Feb 27, 2007@16:13:27

NO Install Message sent

Running Post-Install Routine: POST^CIAVIN11

Do you want to enable VueCentric logins? **Y**

Application logins have been enabled.

Updating Routine file...

Updating KIDS files...

EHR 1.1 Installed.

Feb 27, 2007@16:13:27

No link to PACKAGE file

NO Install Message sent

Install Completed

7.0 Appendix III – Routine Checksums

The following are routine checksums for this release:

| | | | | | |
|----------|----------|----------|----------|----------|----------|
| BEHOARCV | 3000871 | BGOVCPT2 | 2560101 | ORB3 | 19907492 |
| BEHOCACV | 2010006 | BGOVELD | 1044506 | ORCACT0 | 20905964 |
| BEHOCNCV | 1077953 | BGOVER | 1068212 | ORCACT01 | 26732009 |
| BEHODC | 4956351 | BGOVEXAM | 4449546 | ORIN1002 | 3180609 |
| BEHODC6 | 4539861 | BGOVHF | 3953085 | ORMBLDLR | 10033486 |
| BEHODC7 | 10657685 | BGOVIF | 633250 | ORQPTQ4 | 2112891 |
| BEHODC8 | 1507563 | BGOVIMM | 8572006 | ORWDXA | 12838931 |
| BEHODCH | 1609144 | BGOVIMM2 | 4387163 | ORWDXIHS | 782428 |
| BEHODCIN | 924224 | BGOVMSR | 4261720 | ORWDXM1 | 17566433 |
| BEHODCP | 7639145 | BGOVPED | 10714928 | ORWDXR | 7056832 |
| BEHODCS | 6156121 | BGOVPOV | 10037866 | ORWRA | 3180609 |
| BEHOENCV | 172514 | BGOVPOV1 | 6002952 | ORWRP | 17656354 |
| BEHOENCX | 12860726 | BGOVPRC | 1893033 | ORWRPBHS | 2695819 |
| BEHOENIN | 1396444 | BGOVPRV | 780938 | ORWRPP | 12420672 |
| BEHOENP1 | 4675707 | BGOVSK | 3938203 | ORX2 | 5315300 |
| BEHOENPC | 6170570 | BGOVTC | 3917130 | | |
| BEHOENPP | 6777360 | BGOVTM | 1441668 | | |
| BEHOENPR | 1832451 | BGOVTXC | 905236 | | |
| BEHOENPS | 7892705 | BGOWEB | 2800968 | | |
| BEHOENPV | 8099529 | CIANBINI | 3684115 | | |
| BEHOLRCV | 430911 | CIAOINIT | 3069844 | | |
| BEHOPLCV | 3798974 | CIAU | 7860723 | | |
| BEHOPTCX | 6907232 | CIAU1 | 508281 | | |
| BEHOPTIN | 1226518 | CIAUALR | 928023 | | |
| BEHOPTP1 | 10119504 | CIAUBC28 | 2148213 | | |
| BEHOPTP2 | 2470410 | CIAUBC39 | 2796261 | | |
| BEHOPTPC | 2504854 | CIAUBCDA | 3981182 | | |
| BEHOPTPL | 5442710 | CIAUBIG | 6024487 | | |
| BEHOQOW | 7191738 | CIAUDAT | 5928509 | | |
| BEHORDV | 860481 | CIAUDDR | 9459760 | | |
| BEHORMCV | 4503608 | CIAUDIC | 7938841 | | |
| BEHORXCV | 5727204 | CIAUDT | 3374353 | | |
| BEHORXED | 4274427 | CIAUEDT | 16189636 | | |
| BEHORXFN | 8622315 | CIAUHFS | 2629858 | | |
| BEHORXIN | 1242002 | CIAUIMP | 4666764 | | |
| BEHOSICX | 252438 | CIAUIN0 | 1050344 | | |
| BEHOSPUT | 433641 | CIAUIN16 | 1582494 | | |
| BEHOUSCX | 3153275 | CIAUIN18 | 1178580 | | |
| BEHOVM | 16456669 | CIAUIN58 | 1357669 | | |
| BEHOVMIN | 448480 | CIAUIN68 | 1159584 | | |
| BEHOXQ | 9173727 | CIAUIN8 | 1256732 | | |
| BEHOXQCV | 763363 | CIAUINIT | 3174314 | | |
| BEHOXQIN | 2480561 | CIAULK2 | 13861180 | | |
| BEHOXQPC | 3872439 | CIAULKP | 7525106 | | |
| BEHUPCCK | 1571078 | CIAUMTL | 4714339 | | |
| BEHURTNL | 2577521 | CIAUOS | 2226276* | | |
| BEHUTIL | 3048544 | CIAUOS1 | 2630722 | | |
| BGOBMSR | 1110505 | CIAUREG | 578780 | | |
| BGOCC | 2948137 | CIAURPC | 4585641 | | |
| BGOCPTP2 | 7879909 | CIAURPRT | 1778623 | | |
| BGOCPTPR | 3473447 | CIAUSTX | 4121035 | | |
| BGOEDTP2 | 1111180 | CIAUSTX0 | 3170389 | | |
| BGOEDTPR | 2071033 | CIAUSTX1 | 5106879 | | |
| BGOICDLK | 1788776 | CIAUTSK | 891526 | | |
| BGOICDP2 | 1973325 | CIAUUSR | 1781283 | | |
| BGOICDPR | 2013137 | CIAUUU | 1311666 | | |
| BGOPFUTL | 6862899 | CIACXUS | 1255392 | | |
| BGOPOST | 3394384 | CIAVIN1 | 1394162 | | |
| BGOPRBN | 3022823 | CIAVIN11 | 3782338 | | |
| BGOPROB | 5955429 | CIAVINIT | 11001263 | | |
| BGOREF | 1285717 | CIAVINX | 4220061 | | |
| BGOREP | 2241692 | CIAVMCFG | 5908183 | | |
| BGOTRG | 4987991 | CIAVMEVT | 555730 | | |
| BGOUTL | 8302194 | CIAVMRPC | 4523960 | | |
| BGOUTL2 | 6376079 | CIAVUTIL | 4012848 | | |
| BGOVAST | 1478522 | CIAVUTIO | 6442447 | | |
| BGOVCPT | 10766493 | CIAVUTPR | 1113382 | | |

The following NTEG routines may be used to verify checksums for their respective builds:

CIAUNTEG for build CIA UTILITIES 1.2*
CIAVNTEG for build VUECENTRIC FRAMEWORK 1.1V2
BEHON007 for build BEHO*1.1*007001
BEHON026 for build BEHO*1.1*026001
BEHON027 for build BEHO*1.1*027001
BEHON028 for build BEHO*1.1*028001
BEHON029 for build BEHO*1.1*029001
BEHON040 for build BEHO*1.1*040001
BEHON005 for build BEHO*1.1*005001
BEHON031 for build BEHO*1.1*031002
BEHON032 for build BEHO*1.1*032001
BEHON009 for build BEHO*1.1*009002
BEHON033 for build BEHO*1.1*033001
BEHON002 for build BEHO*1.1*002002
BEHON004 for build BEHO*1.1*004002
BEHON034 for build BEHO*1.1*034001
BEHON039 for build BEHO*1.1*039001
BEHON020 for build BEHO*1.1*020001
BEHON023 for build BEHO*1.1*023001
BEHON006 for build BEHO*1.1*006001
BEHON037 for build BEHO*1.1*037001
BEHON001 for build BEHO*1.1*001002
BEHON041 for build BEHO*1.1*041001
BEHON044 for build BEHO*1.1*044001
BEHUNTEG for build BEH UTILITIES 1.2
BGONTEG3 for build BGO*1.1*3
ORNT1002 for build OR*3.0*1002

*Note: the CIAUOS routine is modified during the course of the installation. Its checksum will vary according to the hardware of the hosting machine. The CIAUNTEG routine will flag this routine as modified. This is normal and not cause for concern.